
QIT600F2

USER'S GUIDE

IMPORTANT SAFEGUARDS

Warnings:

1. Read all of these instructions. Save these instructions for later use, please.
 2. Unplug this monitor from the wall outlet before cleaning. Do not use liquid cleaners or aerosol cleaners. Use a damp cloth for cleaning.
 3. Do not use attachments not recommended by the monitor manufacturer as they may cause hazards.
 4. Do not use this monitor near water. For example near a bathtub, washbowl, kitchen sink, or laundry tub, in a wet basement, or near a swimming pool, etc...
 5. Do not place this monitor on an unstable cart, stand, or table. The monitor may fall, causing serious injury to a child or adult and serious damage to the appliance. Use only with a cart or stand recommended by the manufacturer or sold with monitor. Wall or shelf mounting should follow the manufacturer's instructions, and should use a mounting kit approved by them manufacturer.
 6. Slots and openings in the cabinet and the back or bottom are provided for ventilation, and to insure reliable operation of the television receiver and to protect it from overheating, these openings must not be blocked or covered. The openings should never be blocked by placing the monitor on a bed, sofa, rug, or other similar surface. This monitor should never be placed near or over a radiator or heat register. This monitor should not be placed in built-in installation such as a bookcase unless proper ventilation is provided.
 7. This monitor should be operated only from the type of power source indicated on the marking label. If you are not sure of the type of power supplied in your home, consult your monitor dealer or local power company.
 8. This monitor is equipped with a three-wire grounding type plug, a plug having a third (grounding) pin. This plug will only fit into grounding-type power outlet. This is a safety feature. If you are unable to insert the plug into the outlet. Contact your electrician to replace your obsolete outlet. Do not defeat the safety purpose of the grounding-type plug.
 9. Do not allow anything to rest on the power cord. Do not locate this monitor where the cord will be abused by persons working on it.
 10. Follow all warnings and instructions marked on the monitor.
 11. For added protection for this monitor, when it is left unattended and unused for long periods of time, unplug it from the wall outlet. This will prevent damage to the monitor due to power-line surges.
 12. Do not overload wall outlets and extension cords as this can result into fire or electric shock.
 13. Never push objects of any kind into this monitor through cabinet slots as they may touch dangerous voltage points or short out parts that could result in a fire or electric shock. Never spill liquid of any kind on the monitor.
 14. Do not attempt to service this monitor by yourself since opening or removing covers may expose you to dangerous voltage or other hazards. Refer all servicing to qualified service personnel.
 15. Unplug this monitor from the wall outlet and refer servicing to qualified service personnel under the following conditions:
 - a. When the power cord or plug is damaged or frayed.
 - b. If liquid has been spilled into the monitor.
 - c. If the monitor has been exposed to rain or water.
 - d. If the monitor does not operate normally by following the operating instructions. Adjust only those controls that are covered by the operating instructions as improper adjustment of other controls may result in damage and will often require extensive work by a qualified technician to restore the monitor to normal operation.
 - e. If the monitor has been dropped or the cabinet has been damaged.
 - f. When the monitor exhibits a distinct change in performance this indicated a need for service.
 16. When replacement parts are required, be sure the service technician has used replacement parts specified by the manufacturer that have the same characteristics as the original parts. Unauthorized substitutions may result in fire, electric shock, or other hazards.
-

-
17. Upon completion of any service or repairs to this monitor, ask the service technician to perform routine safety checks to determine that the monitor is in safe operating condition.
 18. The socket outlet shall be near the equipment and shall be easily accessible.
 19. The power supply cord is used as the main disconnect device.

1. Introduction

1.1 About the Product

QIT600F2 tablet monitor combines the advantages of LCD monitor with Pen Input Technology. It utilizes electromagnetic technology which guarantees high tablet resolution and fast pen tracking speed. You could work freely and effectively by writing with pen on the screen. QIT600F2 has the following features:

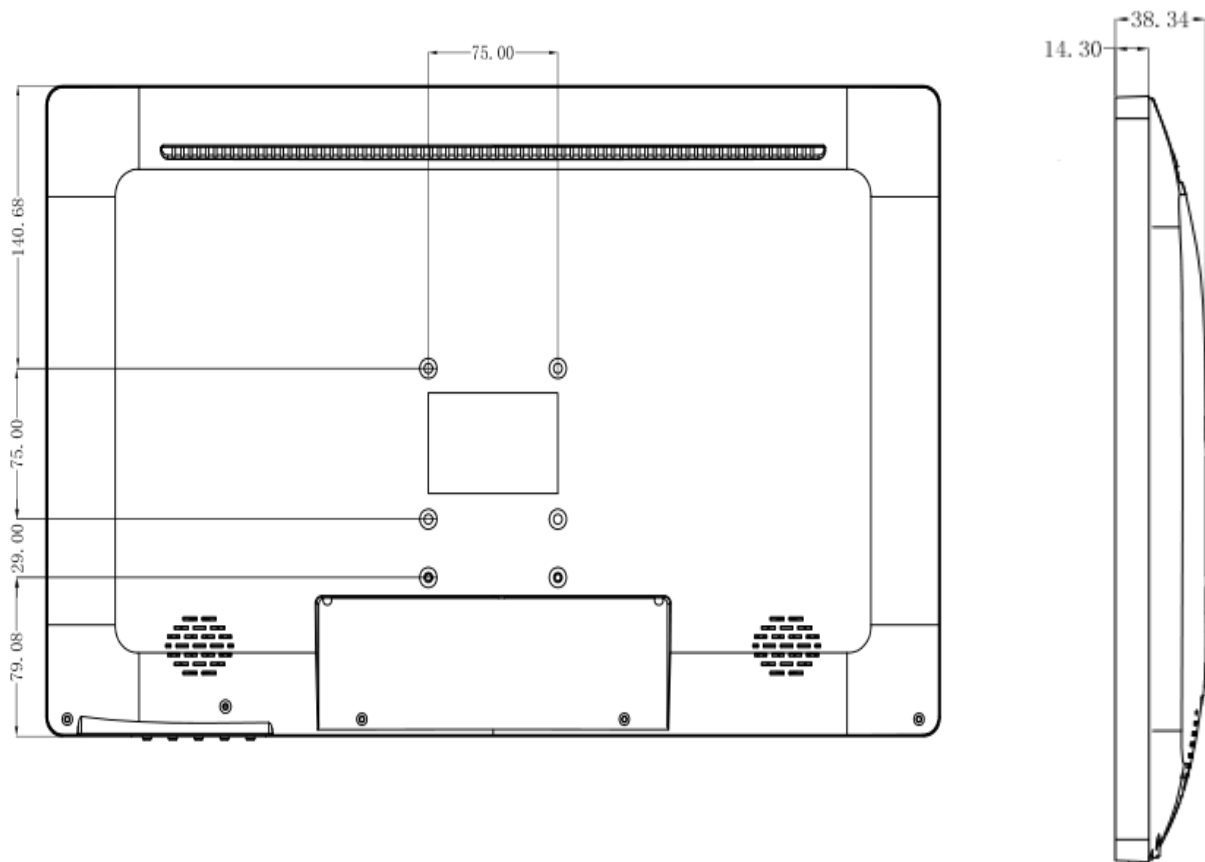
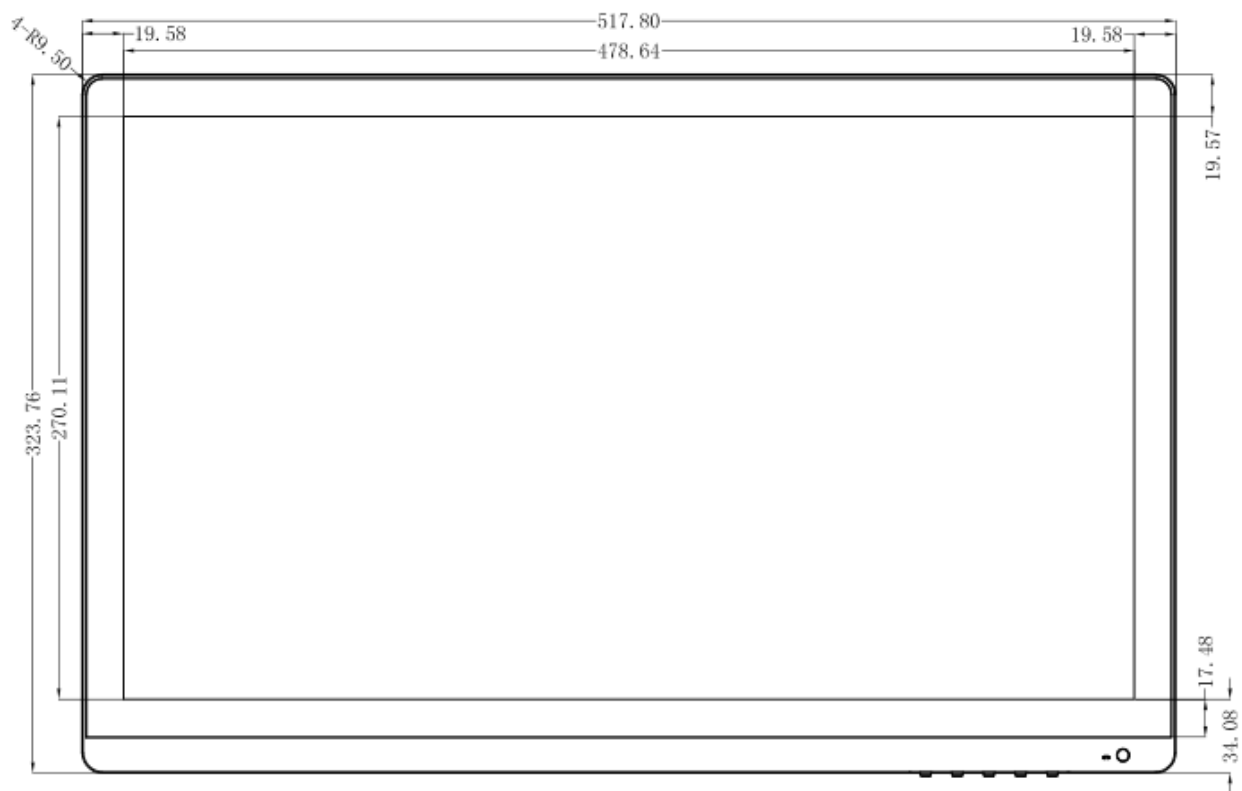
- Active matrix TFT LCD technology
- 1920x 1080 FULL HD resolution
- 21.5"±viewable display area
- Pen-Input technology
- Tablet resolution:2000Lpi
- Tablet Pressure: 1024 levels
- Direct Analog signal Output/Input
- Dual-hinge Stand (12 ~ 130 degree)

1.2 Package Overview

After unpacking, make sure that all of the following parts are included.

| No. | Name | Qty |
|-----|-------------------------------|-----|
| (1) | 21.5-inch LCD monitor | 1 |
| (2) | Battery Stylus pen | 1 |
| (3) | Spare pen tips | 2 |
| (4) | Pen Clip | 1 |
| (5) | Adapter | 1 |
| (6) | Power cable | 1 |
| (7) | HDMI cable | 1 |
| (8) | USB cable | 1 |
| (9) | CD-ROM- includes User's Guide | 1 |

1.3 Display overview



External control buttons



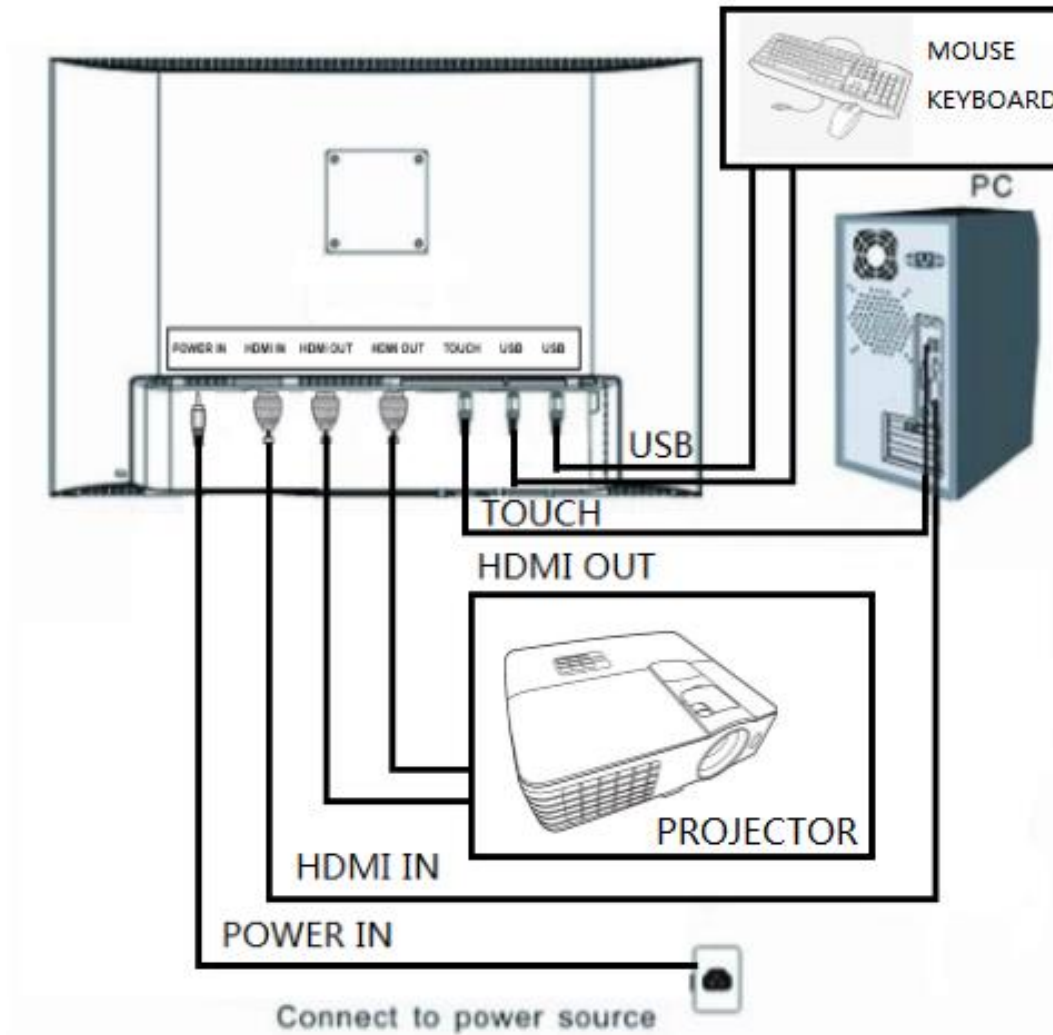
| | | | |
|---|-------------------------|---|--------------|
| 1 | Automatic image setting | 4 | Menu |
| 2 | Down adjust | 5 | Power on/off |
| 3 | Up adjust | | |

1.4 Installation

1.4.1 System Requirements:

Before using the QIT600F2, make sure your PC Operation system is Windows XP, Windows 7, Windows 8, Windows 10 or Mac 10.9 or above.

1.4.2 Connection Procedure



(1) Connect the HDMI cable to the HDMI input port in the back of the QIT600F2. Connect the other end of the HDMI cable to the PC HDMI port.



(2) Connect the USB Type B cable to the TOUCH port in the back of the QIT600F2. Connect the other end of the cable to a USB port on the PC.

(3) Connect the power cable from the AC socket of the LCD to the AC mains socket nearby.

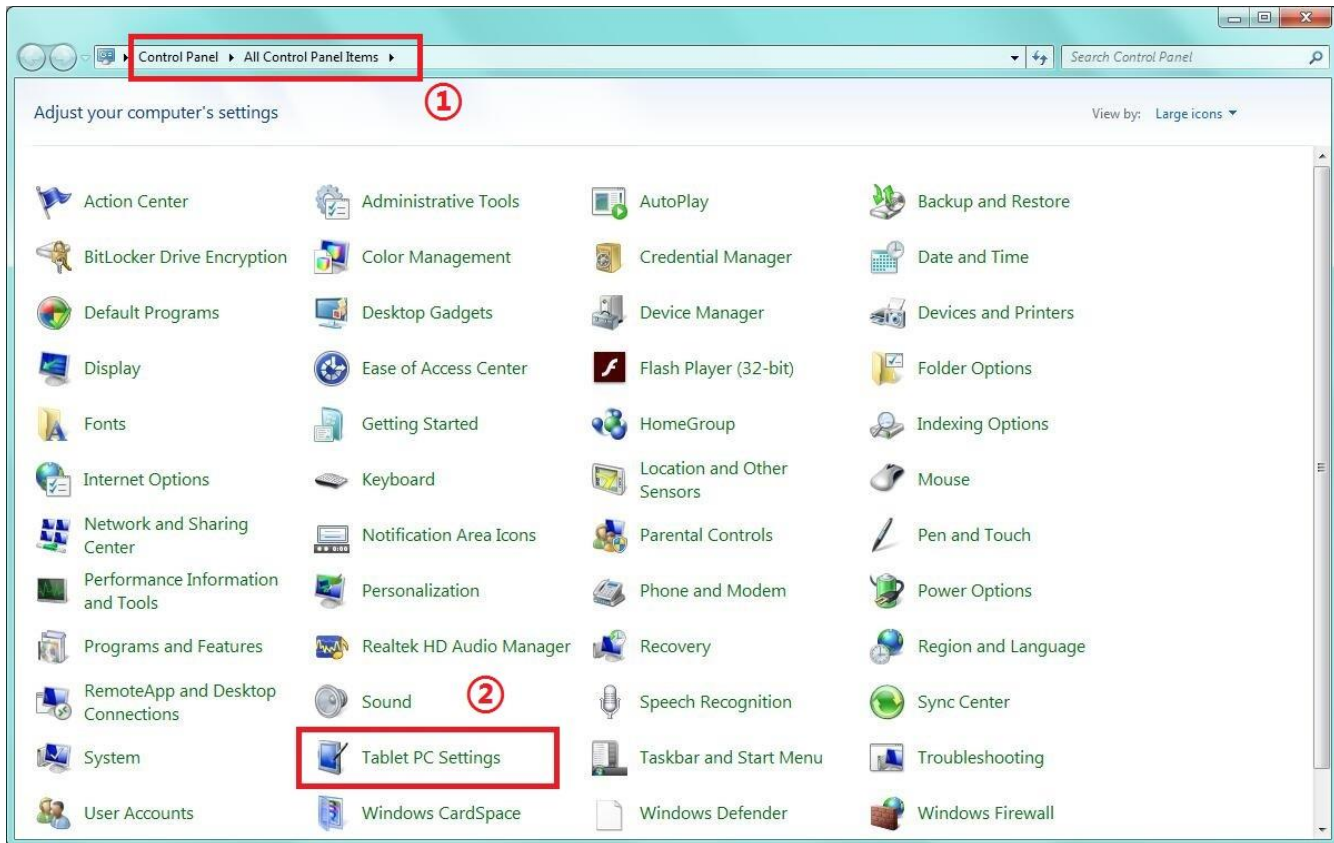
(4) 2 HDMI OUT ports are for projectors or other monitors.

(5) 2 USB Type A ports are for mouse or keyboard.

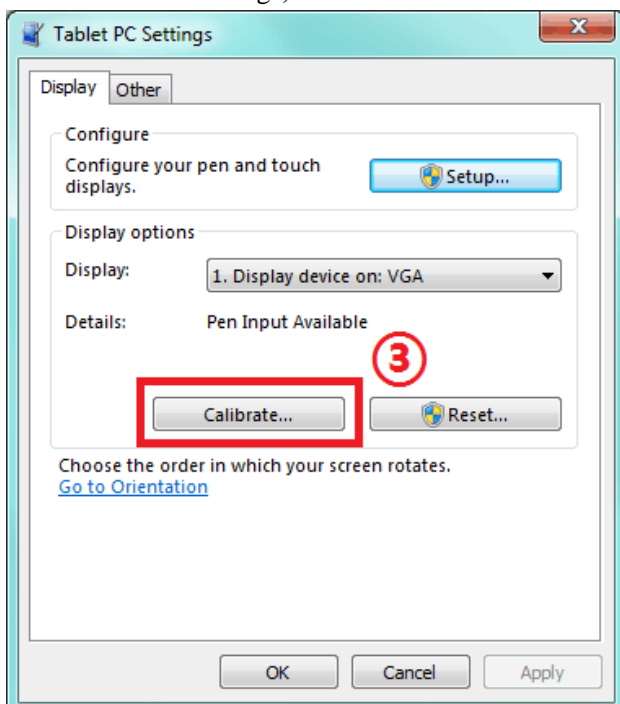
1.4.3 Writing Calibration

If the writing function is installed successfully, there will be this icon  on the taskbar. Or this icon  will show on the taskbar.

In case calibration is needed, find Tablet PC Settings in the control panel.



Enter Tablet PC Settings, then click “Calibrate “.



Please use pen to follow calibration instruction and click this icon

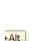



A small icon of a keyboard key with the word "Alt" on it.

A red circle containing the number 4.

To provide calibration samples, tap the crosshair each time that it appears on the screen.

Right-click anywhere on the screen to return to the last calibration point. Press the Esc button to close the tool. Do not change your screen orientation until you have completed the calibration process.

A small icon of a keyboard key with the word "Alt" on it.

A red circle containing the number 5.

To provide calibration samples, tap the crosshair each time that it appears on the screen.

Right-click anywhere on the screen to return to the last calibration point. Press the Esc button to close the tool. Do not change your screen orientation until you have completed the calibration process.



6

To provide calibration samples, tap the crosshair each time that it appears on the screen.

Right-click anywhere on the screen to return to the last calibration point. Press the Esc button to close the tool. Do not change your screen orientation until you have completed the calibration process.



7

To provide calibration samples, tap the crosshair each time that it appears on the screen.

Right-click anywhere on the screen to return to the last calibration point. Press the Esc button to close the tool. Do not change your screen orientation until you have completed the calibration process.

2. Usage Procedures

This section describes the basic procedures for using QIT600F2. For information on using advanced QIT600F2 features, see the QIT600F2 User's Guide.

2.1 Notice when displaying screens at FULL HD resolution

Make sure to set the monitor refresh rate to 60 Hz if displaying the QIT600F2 at Full HD resolution (1920*1080). If used at a refresh rate other than 60 Hz, the pen may not operate correctly due to noise from the LCD panel. (For details on how to set refresh rate to 60 Hz, please check your PC manual and other documentation.)

2.2 Using the Battery Pen

This section describes how to use the QIT600F2 Battery Pen.

2.2.1 Battery Pen Operations

The Battery Pen can be used in the same way as a mouse. Under the Battery Pen default settings, the pen tip button is set to the function of left mouse button. In Windows system, the pen tip could be used to perform the following mouse actions.

Clicking

Press the pen tip against the display with a suitable amount of force and then release it quickly.

Double-clicking

Press the pen tip against the display with a suitable amount of force and then release it, two times in a row.

Dragging

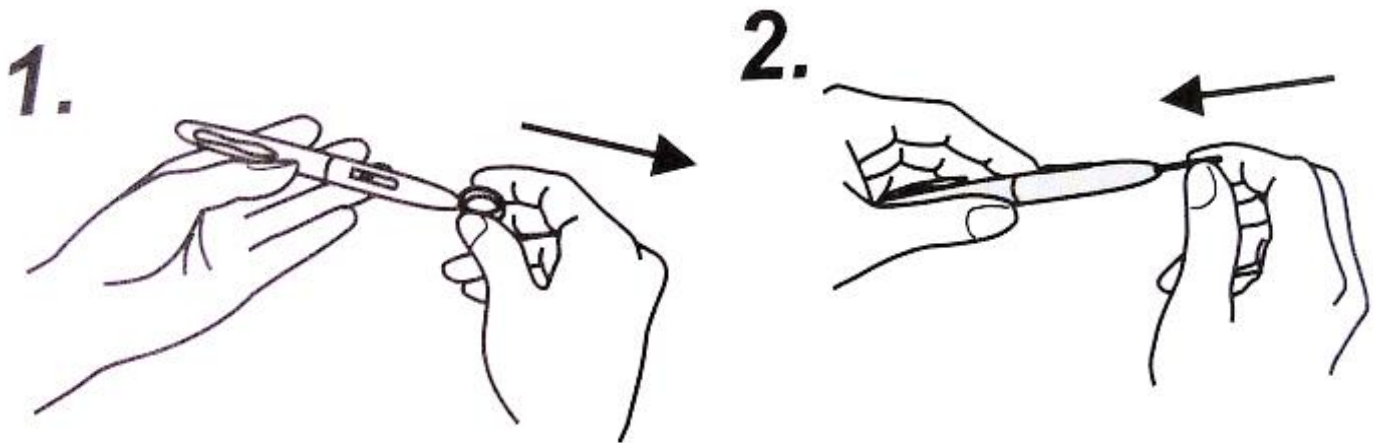
Press the pen tip against the display with a suitable amount of force and then move the pen while keeping it pressed against the display (without releasing it from the display).

The permitted stylus pen input angle range is 30 ° in any direction from a position where the stylus pen is perpendicular to the display surface. Note that if the pen is tilted at an angle greater than 30 °, its coordinates may not be input correctly.

2.2.2 Replacing the Battery Pen Tip

When the Battery Pen tip wears down and becomes too short, replace it as described below.

- (1) Using the special clip to remove the Battery Pen tip.
- (2) Insert a new pen tip into the stylus pen.



2.3 Using the OSD Menu

The OSD menu is used when adjusting the QIT600F2 LCD screen. OSD is an abbreviation for On-Screen Display. The OSD feature allows you to view and adjust the settings of the display effect on the screen.

2.3.1 OSD Buttons and Their Functions

Main menu

OSD main menu gives you an overview of the control options available. When you want to make adjustment of the image displayed on the screen, press and release the button “Menu”.

1. PICTURE

Backlight - Adjust the luminance level from behind.

Brightness - Adjust the luminance level in the image.

Contrast - Adjust the difference in luminance between light and dark areas of the image.

Sharpness - Adjust the quality or state of being sharp.

Exit - Close the PICTURE menu.



2. DISPLAY

Auto Adjustment - Adjust geometry of the image automatically.

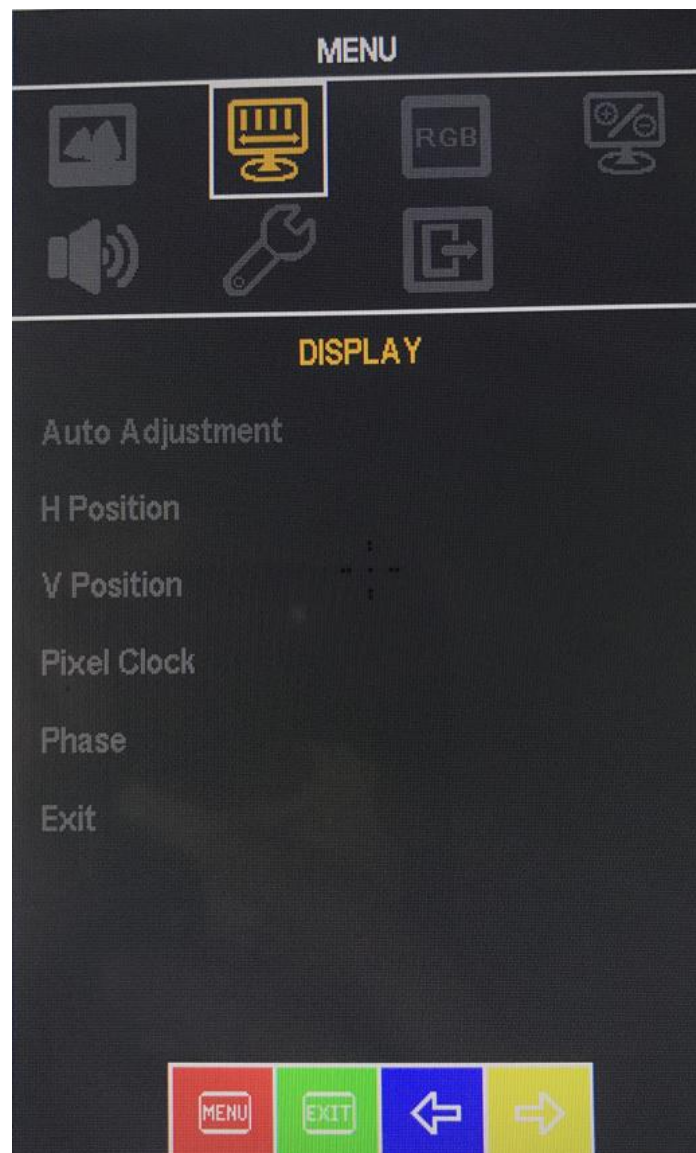
H Position - Adjust the horizontal position of the image.

V Position - Adjust the vertical position of the image.

Pixel Clock - Adjust the horizontal sync size of signal.

Phase - Adjust the horizontal sync phase of signal.

Exit - Close the DISPLAY menu.



3. COLOR

Gamma - Adjust the color level in the image.

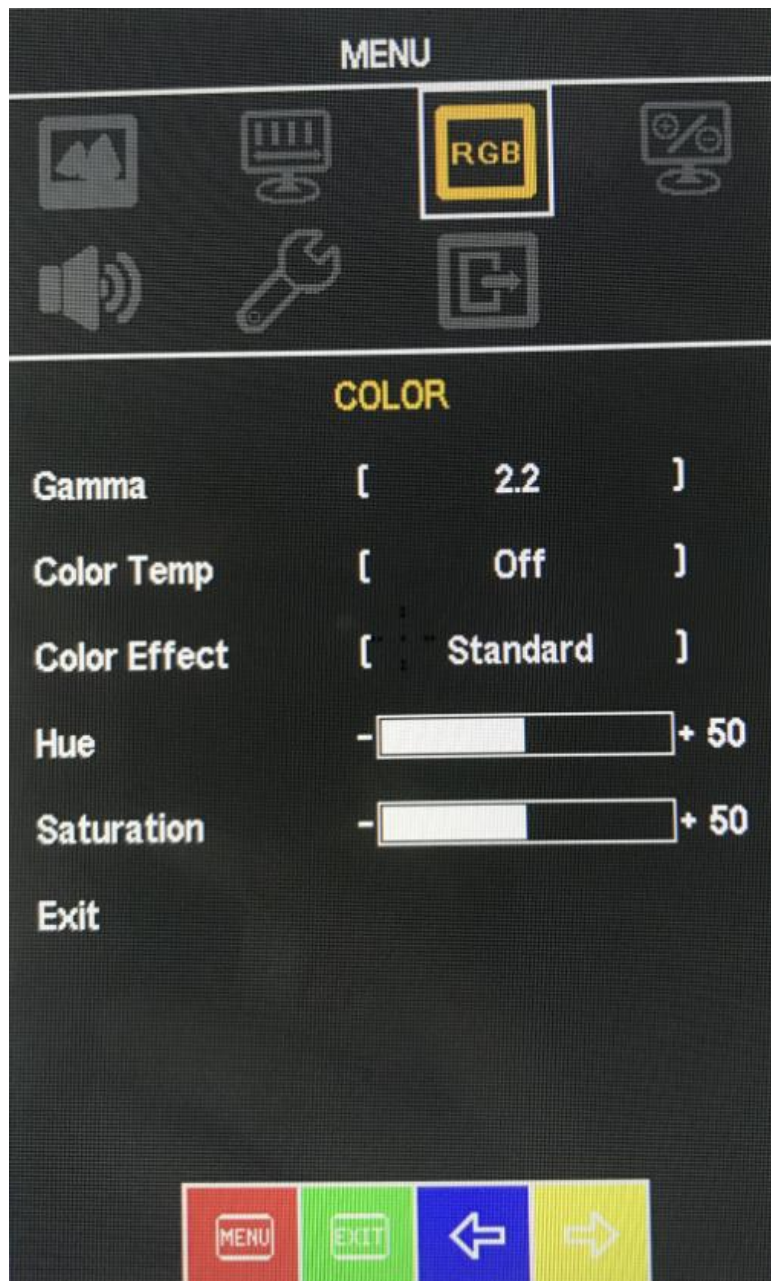
Color Temp - Adjust the R.G.B. gain level. (Red Green Blue)

Color Effect - Adjust the different color in the image.

Hue - Adjust the color or shade.

Saturation - Adjust the color level to be the highest.

Exit - Close the COLOR menu.



4. ADVANCE

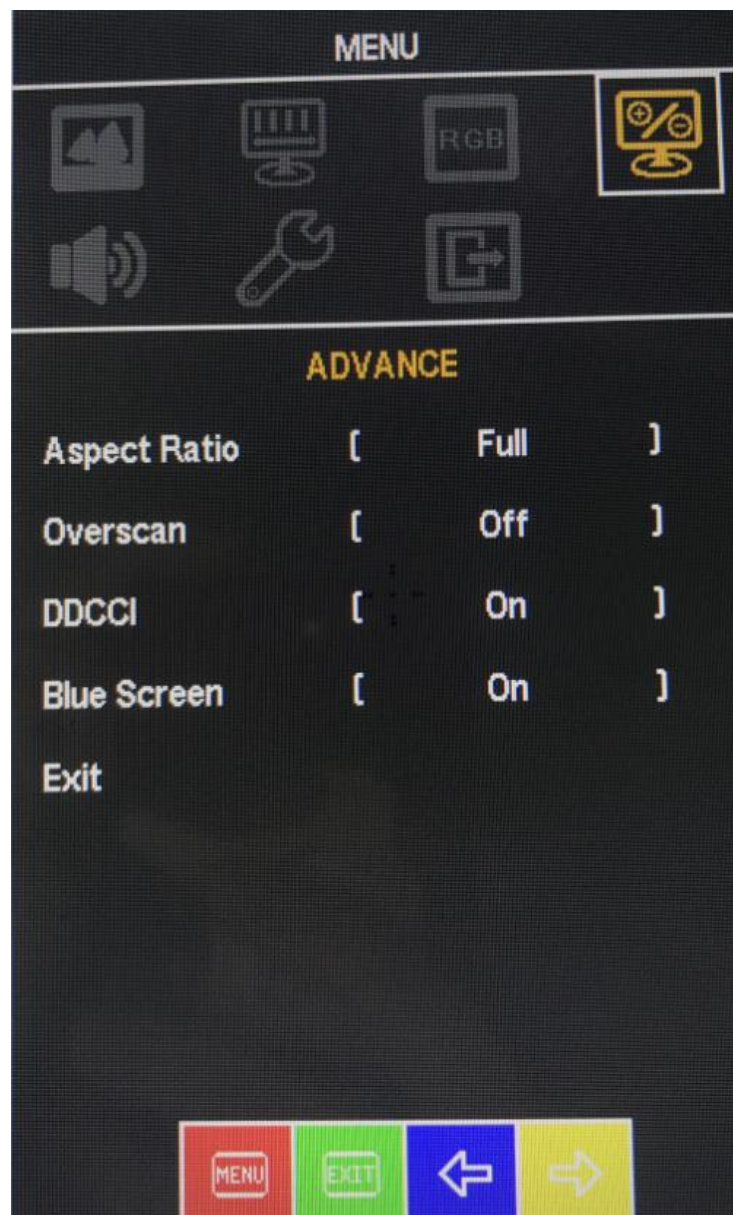
Aspect Ratio - Adjust the ratio of the width to the height of an image or screen.

Overscan - Adjust the additional area around the four edges of a image.

DDCCI - Adjust the setting and color by Display Data Channel Command Interface.

Blue Screen – Adjust the blue background when monitor have a sudden system failure.

Exit - Close the ADVANCE menu.



5. AUDIO

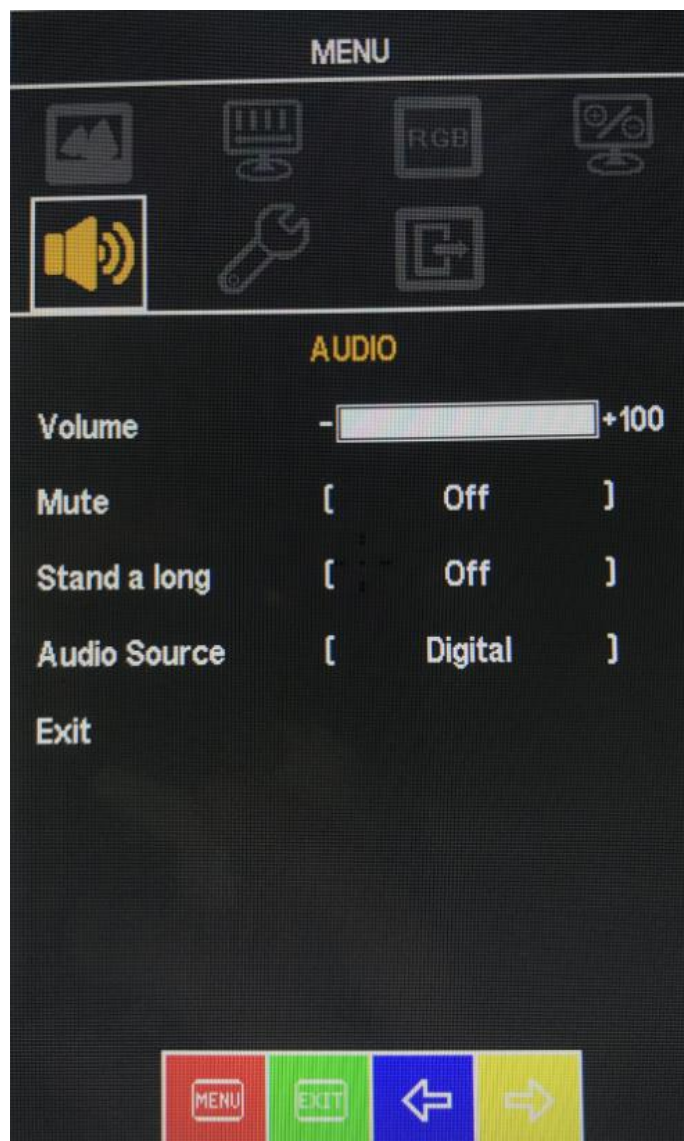
Volume - Sets the volume of the OSD windows.

Mute - Adjust the audio to be silent or not.

Stand a long - Adjust to be in a vertical state or to put into a vertical state.

Audio Source - Adjust of or relating to sound or hearing.

Exit - Close the AUDIO menu.



6. OTHER

Reset – Adjust to set again or differently.

Menu Time – Adjust the time to shown menu on the display of monitor.

OSD H Position - Adjust the horizontal position of the OSD image.

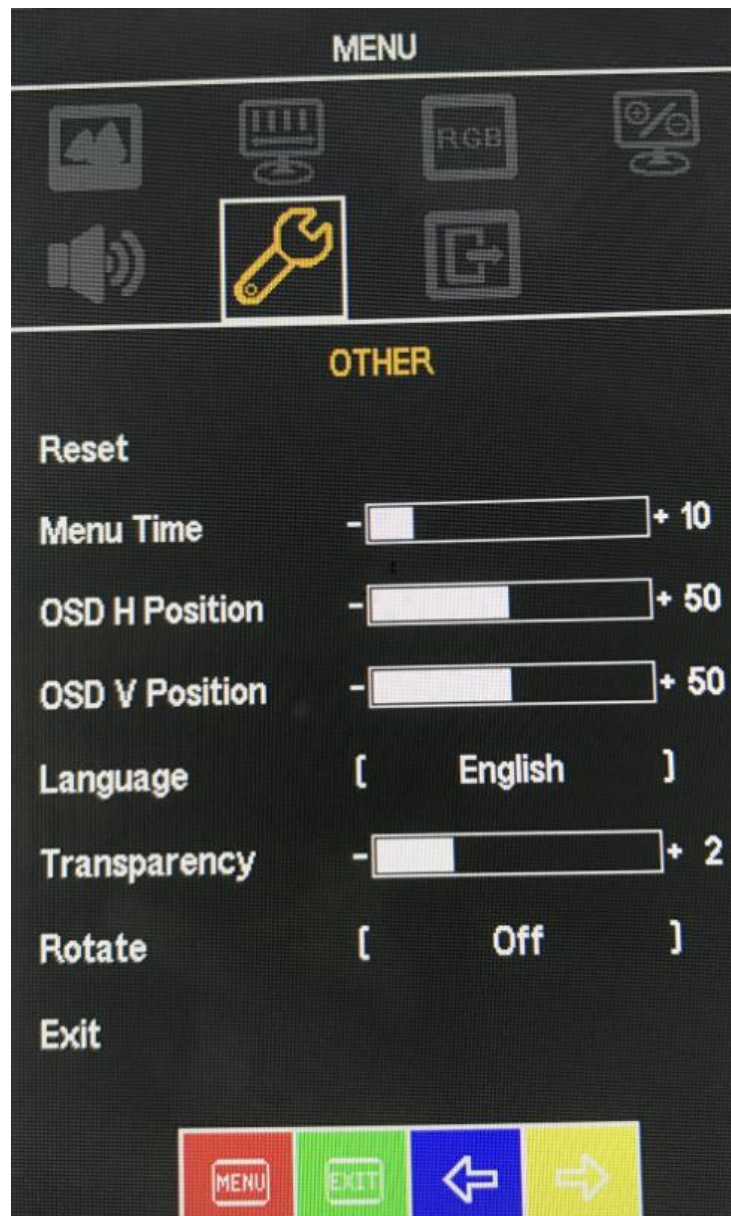
OSD V Position - Adjust the vertical position of the OSD image.

Language - Sets the language of the OSD windows.

Transparency - Adjust the picture display more clear.

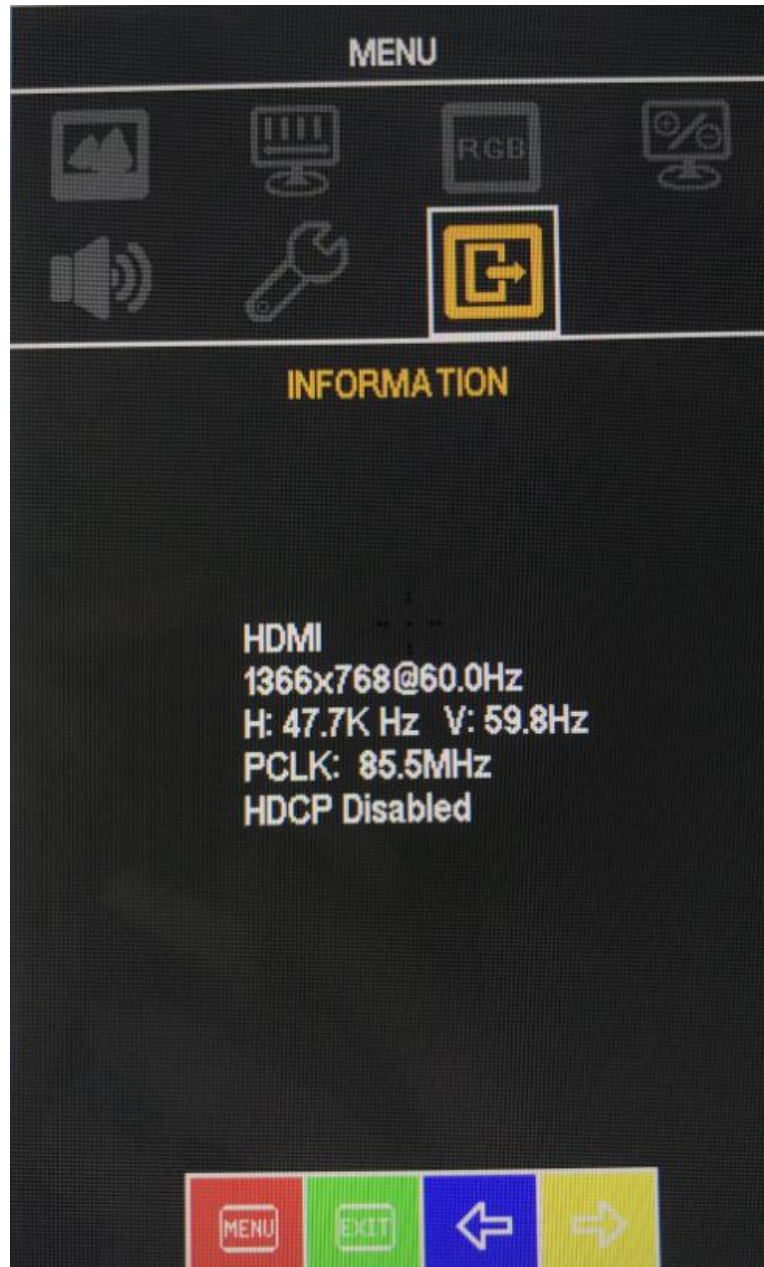
Rotate - Exchange on a regular basis.

Exit - Close the OTHER menu.



7. INFORMATION

Show the basic data of this touch monitor.



Appendix A

Troubleshooting

First, check adjustments and handling methods and check for poor cable connections. Those are often the causes of problems.

Screen display-related problems

| In this case | Possible causes of issue | Solutions |
|--|---|---|
| PC screen does not display on QIT600F2 | Is the PC power on? | To deal with problem see the PC manual and other documentation. |
| | Is the HDMI cable connected to both the PC and QIT600F2 properly? | Connect the HDMI cable correctly. |
| | For laptop PCs, is external (RGB) output selected? | Connect cable after starting up the PC, or switch to external (RGB) output at the screen display mode settings. (Method of switching differs by PC. For instructions, see the PC manual and other documentation.) |
| | Was LCD and monitor switching done right (may be assigned to a function key)? | Check if LCD and monitor are both selected, or that just the monitor is selected. (For details on selection, see the PC manual and Other documentation.) |
| | Other | Contact technical support. |

Stylus pen-related problems

| In this case | Possible causes of issue | Solutions |
|---|---|---|
| Stylus pen does not operate. | Is pen tip worn down? | Check if the pen tip is worn down or is too short. (For details of how to replace the stylus pen tip, see “2.2.2 Replacing the Stylus Pen Tip”) |
| | Are there any electronic devices located nearby the QIT600F2 such as microwave ovens or radio transmitters that emit electromagnetic noise? | This product is susceptible to electromagnetic noise, so use the QIT600F2 away from devices that emit electromagnetic noise. |
| | Other | Restart Windows. |
| | | Make sure driver is installed. If driver is installed, try de-installing for use without the driver. |
| | | Contact technical support. |
| Stylus pen tip and pen cursor positions do not match. | Did you calibrate the pen position? | We have a built-in proper calibration setting in QIT600F2. The additional calibration will alter the accuracy. Please cancel the calibration you did to recover to the default one. |
| | Other | Make sure driver is installed. If driver is installed, try de-installing for use without the driver. |
| | | Contact technical support. |

Appendix B

System Specifications

| Item | | Specification |
|----------------------------------|-----------------------|---|
| Product name | | QIT600F2 |
| Display characteristics | Panel Type | Active-Matrix Liquid Crystal Display (TFT) |
| | Effective screen size | 21.5 inch 478.64(H) X 270.11(V) |
| | Resolution | 1920(H) x 1080 (V) |
| | Standard colors | 16.7M |
| | Brightness | 250 cd/m2 |
| | Contrast ratio | 5000:1 |
| | Viewing angles | 178 °(H), 178 °(V) |
| Digitizer characteristics | Input system | Electromagnetic |
| | Pen | Battery pen |
| | Tablet resolution | 2000Lpi |
| | Pen Pressure | 1024 levels |
| | Reading accuracy | ±0.5 mm (center) |
| | Tracking speed | Approximately 180 points per second |
| | Interface | USB interface (USB3.0) |
| Input/output | Input | HDMI |
| | Output | HDMI |
| Environmental conditions | Temperature | During use: +10 – +35 °C; in storage: -20– +60 °C |
| | Humidity | During use: 10-80% (no condensation); in storage: 5-95% (no condensation) |
| Power consumption / power supply | | 40 W or less (4W or less in power saving mode) / AC in |
| External dimensions | | 517.8 (W)×323.76 (H)×38.34 (D) mm (without stand) |
| Stand adjustment | | Adjustable in the range of 12 °to 130 ° |
| Compatible operating systems | | Windows XP, Windows 7, Windows 8, Windows 10 or Mac 10.9 or above. |