

QVote User Manual



www.qomochina.com

Introduction

QVote is a interactive software that matching our response system QRF888 and QRF999. It has strong compatibility, simple interface operation and abundant functions. QVote software aimed in the function of student management, classroom interaction, classroom assessment, report export.

PC lowest configuration request:

- ✓ CPU: 2.7GHz x86 or x64
- ✓ RAM: 2G or above
- ✓ ROM: 128G
- ✓ SYSTEM: Windows 7/8 /10

PC Recommended configuration:

- ✓ CPU: 3.2GHzx64
- ✓ RAM: 4G or above
- ✓ ROM: 500G
- ✓ SYSTEM: Windows 7/8/10

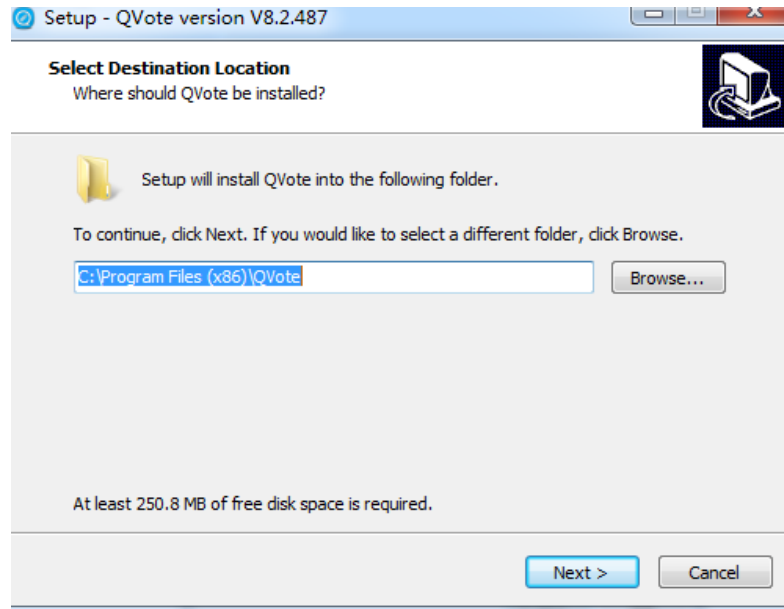
QRF888/QRF999 User requirement

- ✓ QRF888: Install CDM21228 driver before using
- ✓ QRF999:
 - Install LAN9500ANetwork Card Driver. Set IP address to be: 192.168.234.10, Subnet mask to be : 255.255.255.0
 - Close Windows firewall.

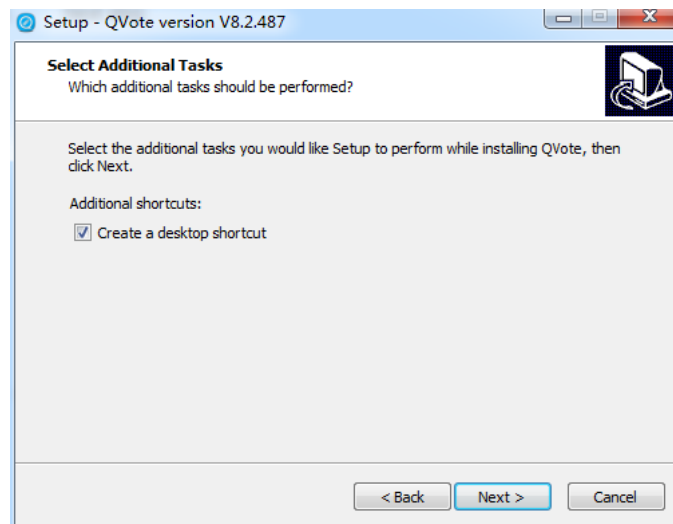
1. Software install and uninstall

1.1. Install

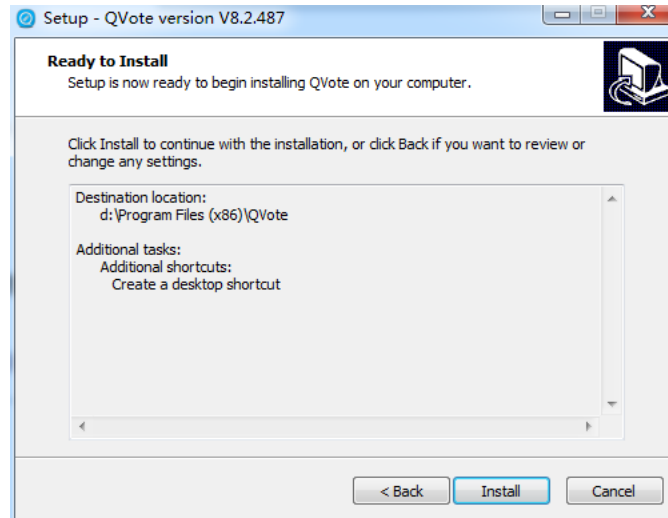
- a. Click QVote Setup.exe
- b. Choose path, click “next step” go to install page



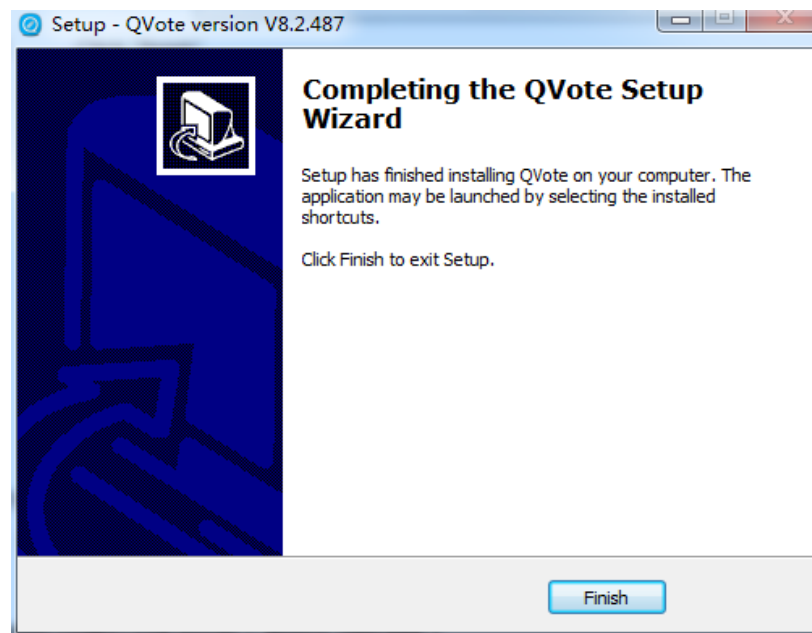
- c. Next step:





- d. Choose “Create Desktop Shortcuts” and click Next
- e. Click ”install” in the pop up box



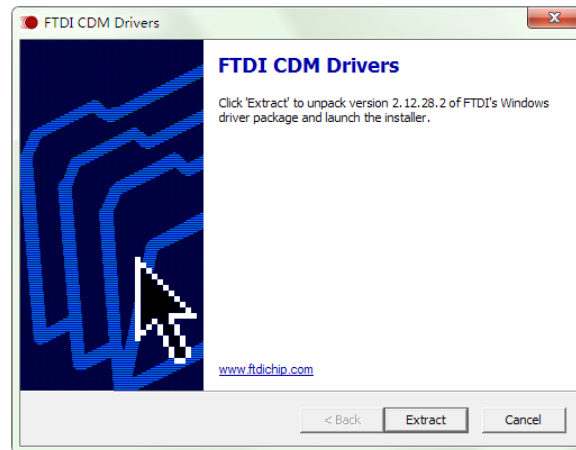
f. Click “finish”



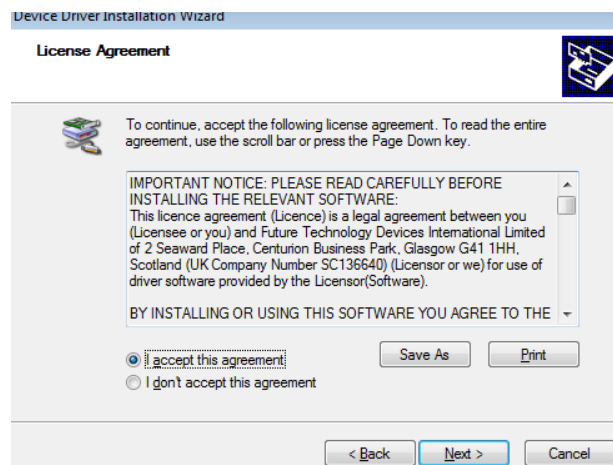
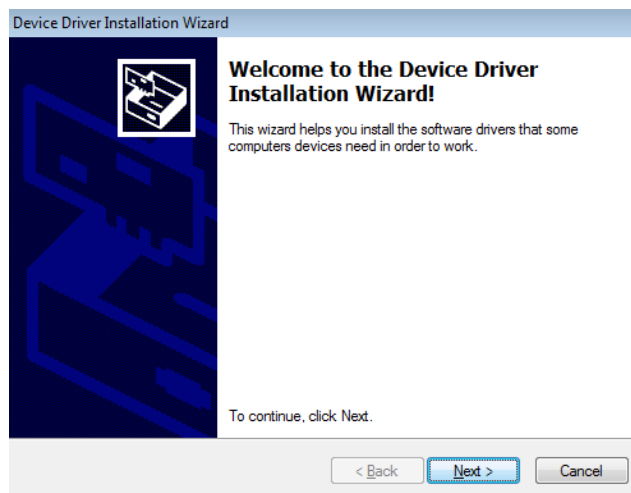
g. There will be two shortcuts icons on desktop after you finish installing  (QVote) , 
(ClassManager)

1.2. Install CDM21228 driver (Match QRF888)

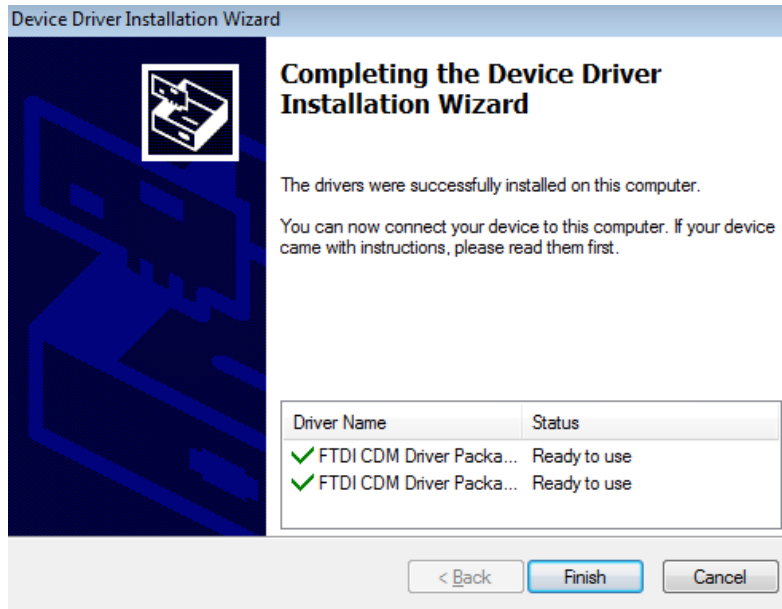
a. Click CDM21228 install files , select “Extract”



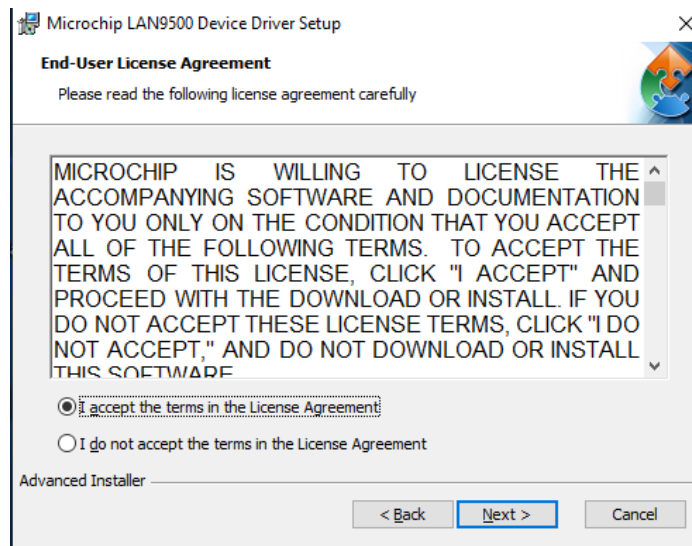
b. "Next"

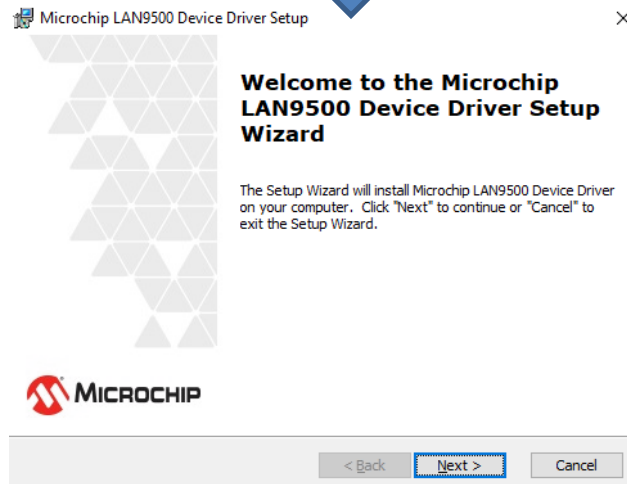
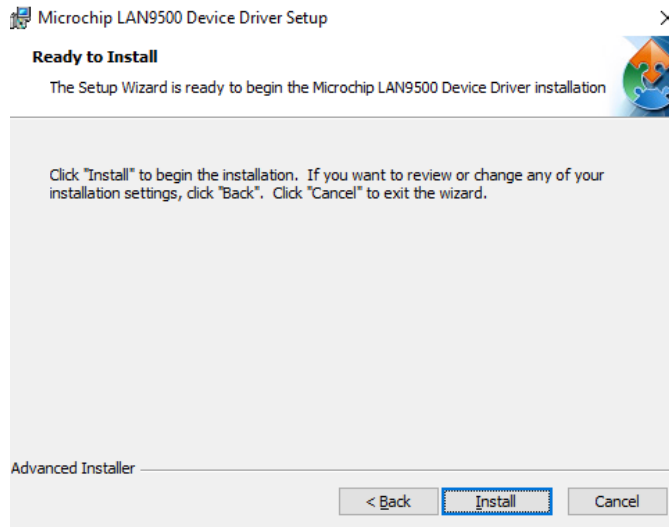
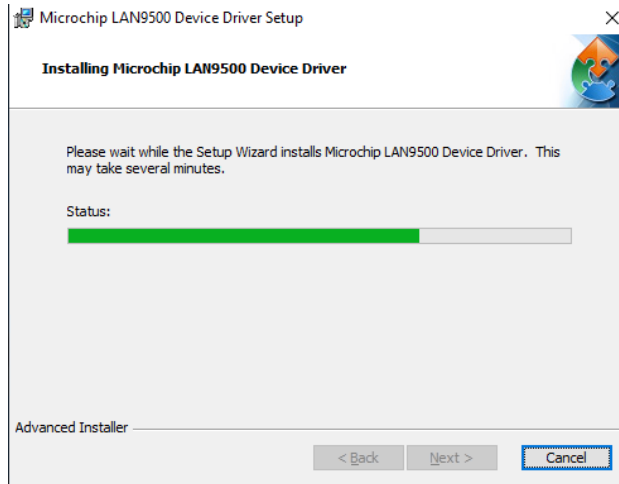


c. Click "finish" to exit



1.3. Install Lan9500 driver (match QRF999)



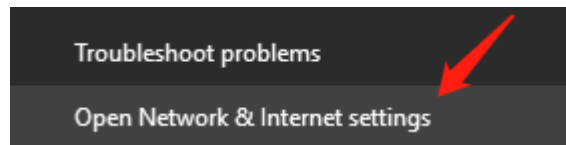


a. Set LAN9500 network driver IP address :

- Open Network & Internet settings (Take Win10 System as example), right-click the "Network Connection" icon in the lower right corner of Win10



, Select "Open Network & Internet settings"



- Click "Change adapter settings" on the left up corner

Control Panel Home

[Change adapter settings](#)

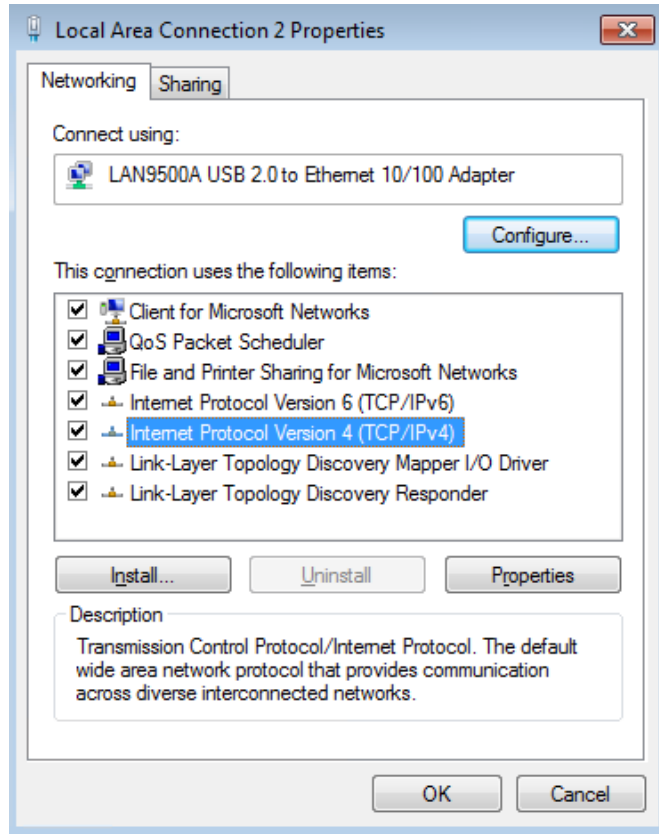
Change advanced sharing settings

Media streaming options

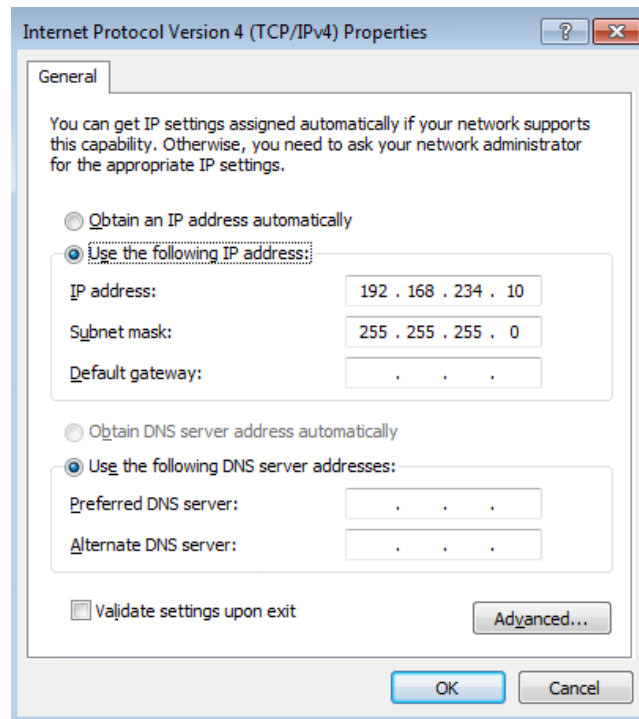
- Select LAN9500A driver---Attribute



- Select Internet Protocol Version 4 (TCP/IPV4) ---Attribute



- Set IP address: "192.168.234.10", Subnet mask "255.255.255.0"




- Close Windows firewall


Customize settings for each type of network

You can modify the firewall settings for each type of network location that you use.


What are network locations?


Home or work (private) network location settings

-  Turn on Windows Firewall
- Block all incoming connections, including those in the list of allowed programs
 - Notify me when Windows Firewall blocks a new program

-  Turn off Windows Firewall (not recommended)

Public network location settings

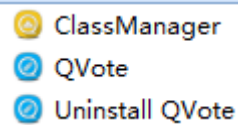
-  Turn on Windows Firewall
- Block all incoming connections, including those in the list of allowed programs
 - Notify me when Windows Firewall blocks a new program

-  Turn off Windows Firewall (not recommended)

1.4. Software Uninstall

Note : Please make sure you had closed the software before uninstalling

- a. Select the file folder QVote on Open Menu----uninstall



- b. Select "uninstall QVote", and confirm

2. Software main interface



There are 5 modules in main interface: Students information, Menu, Desk, Interactive tool, Page tool.

Students Information: It shows students that connected, answer status and answer details


Menu: Open(import PPT), device management, report export, setting, help, exit

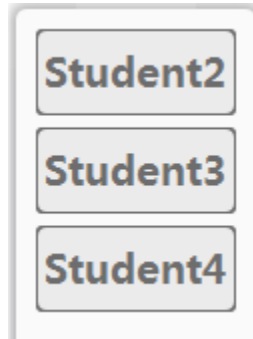
Desk: QVote desk floating icon

Interactive Tool: Selection, Writing, Eraser, treasure chest , Begin

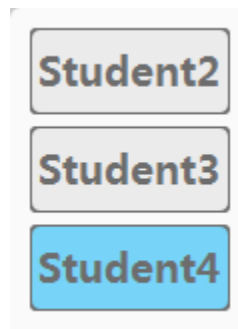
Page Tool: Add page, Page up, Page down, Next page

2.1. Students Information

- a. Click “”, It allows you to check the connection status of students



- b. When students submit the answer, the status will become blue

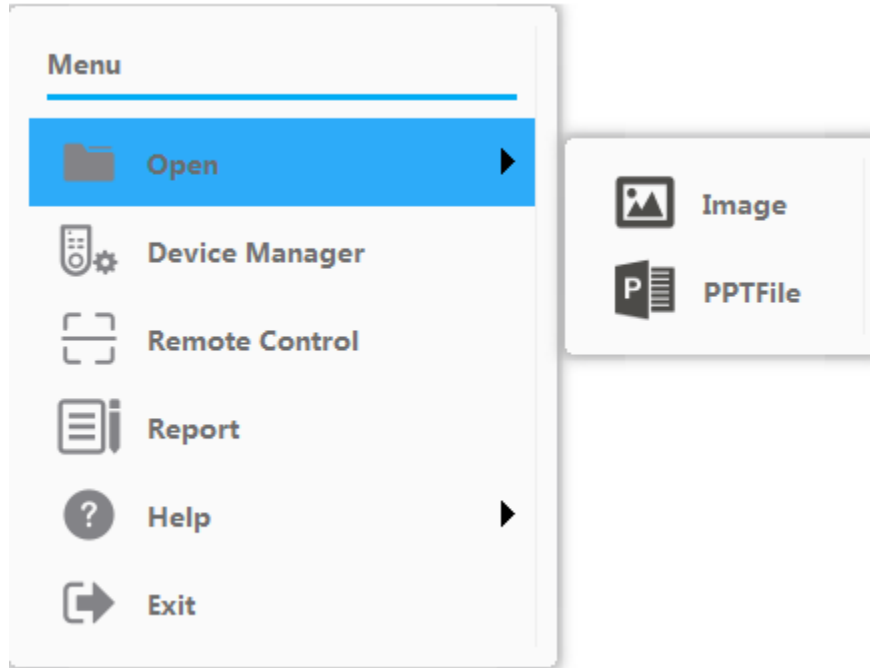


- c. Double-click the students name to check answer detail.

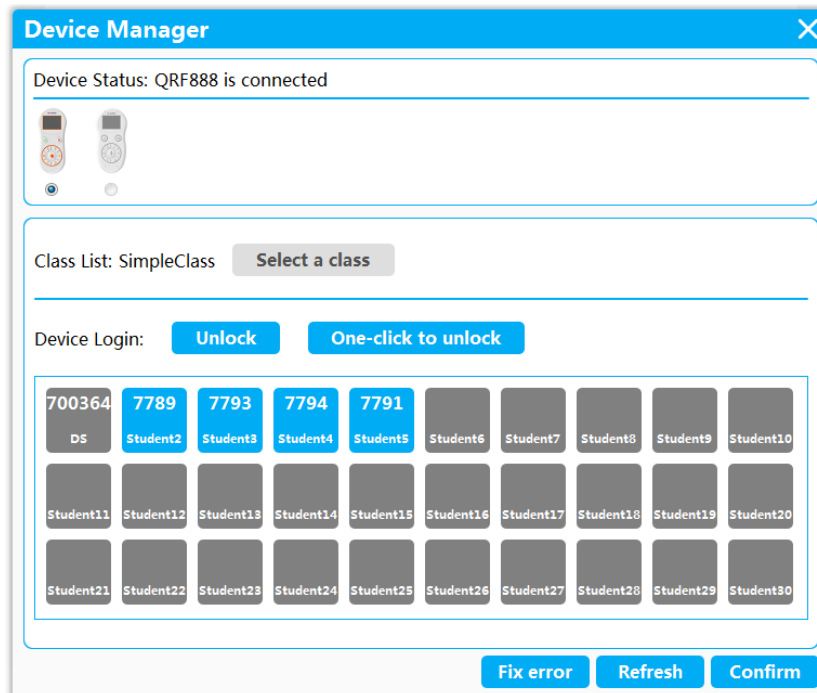
Response Detail		
Student ID	Student Name	Results1
1	DS	
2	Student2	
3	Student3	
4	Student4	
5	Student5	
6	Student6	
7	Student7	
8	Student8	
9	Student9	
10	Student10	
11	Student11	
12	Student12	
13	Student13	
14	Student14	
15	Student15	
16	Student16	
17	Student17	
18	Student18	

2.2. Menu

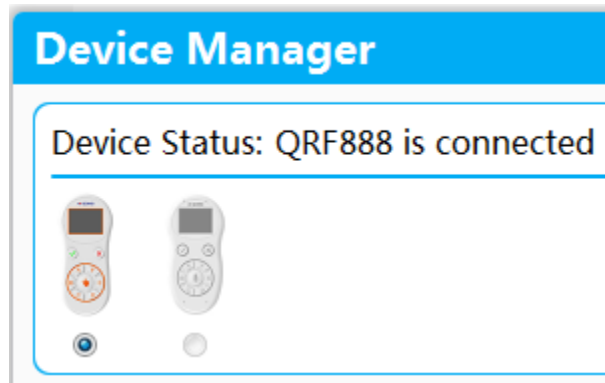
- a. Open: export files from computer, support the format of image, PPT



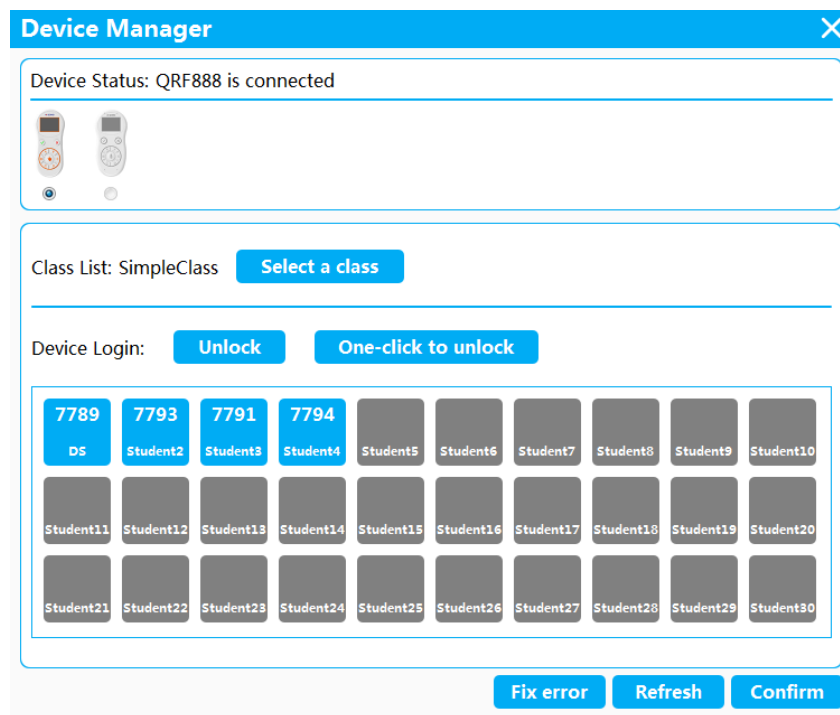
b. Device Management: Device connection, Class list, Device login



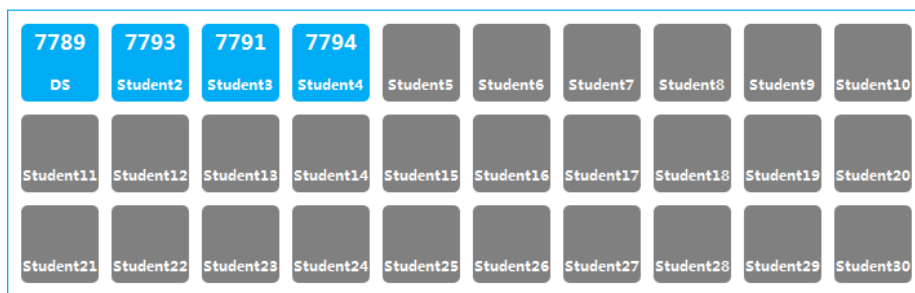
- Device connection: Host connection status, device model, it means connection is successful if the indicator is on.



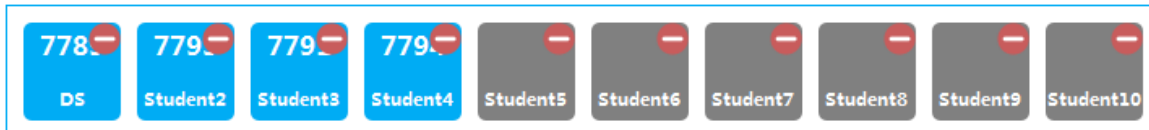
- Class list: It allows you to select the class list in Classmanager



- Device login: It shows students name list, blue means students is connected. Grey means unconnected.



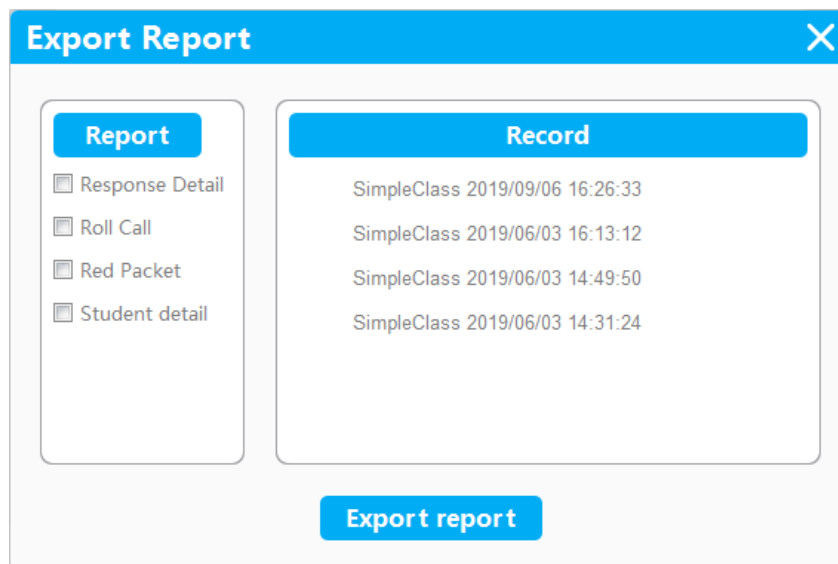
- Device unbound: To log out, click



- Correct mistake: If the host or students remote connection are abnormal, you manage in this menu.
- Refresh: Refresh students name list, check the connection status (note: it needs refresh after unbound).
- Confirm: After managing device, you need click “confirm”.

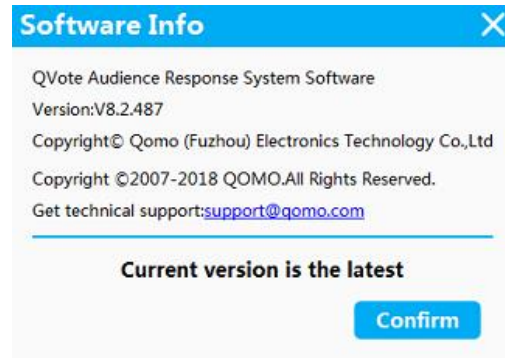
2.3. Report

- a. It will have report automatically after answering: class list, answer report, roll call report



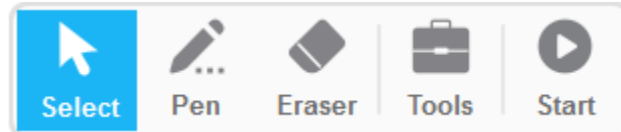
- b. Select class record, export excel report Setting speech answer, Batch-single choice answer, Excel model editing, importing and opening

2.4. Help

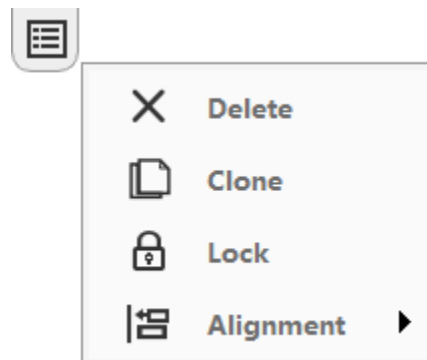
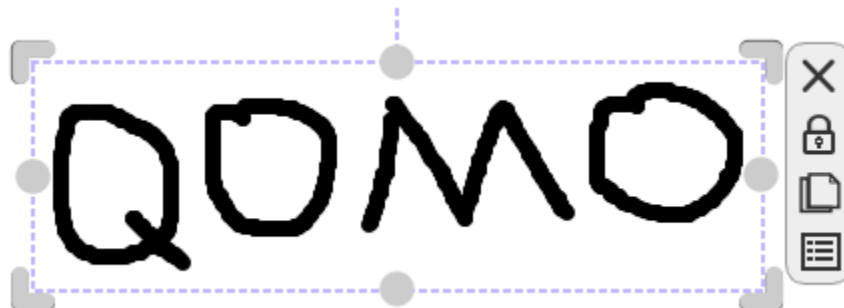


2.5. Exit: exit the software

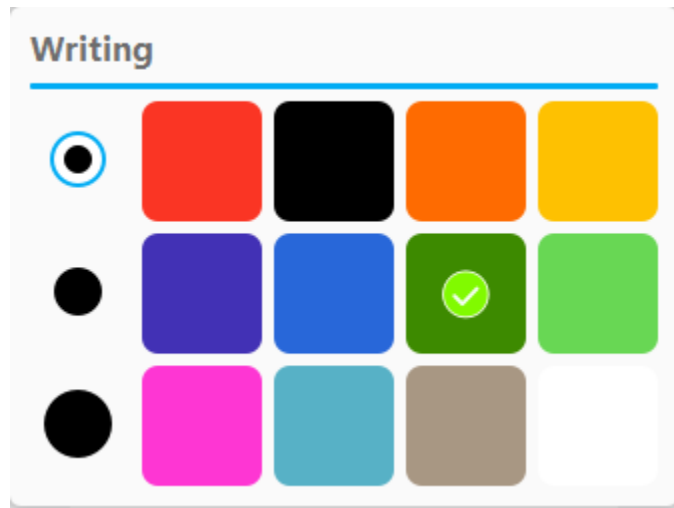
Interactive tool bar introduction



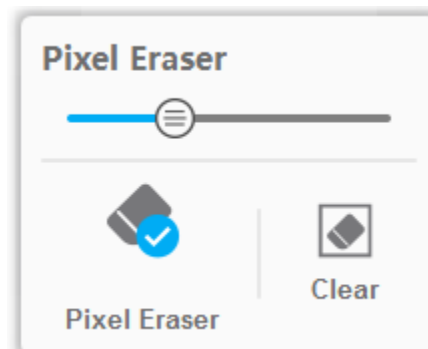
2.6. **Select** : Click pen icon---drawing---select to capture your writing. Drawing board object selection, move, delete, lock, copy etc..



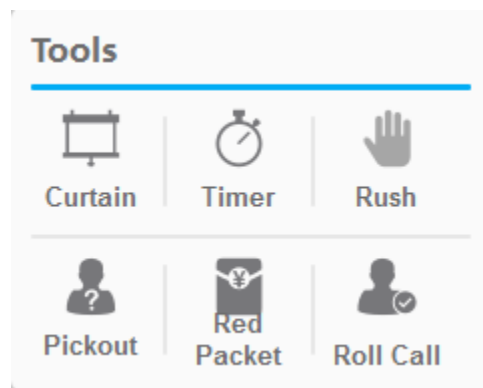
2.7. **Writing:** Drawing board annotation, support setting fonts



2.8. **Eraser:** Pixel eraser; clear drawing



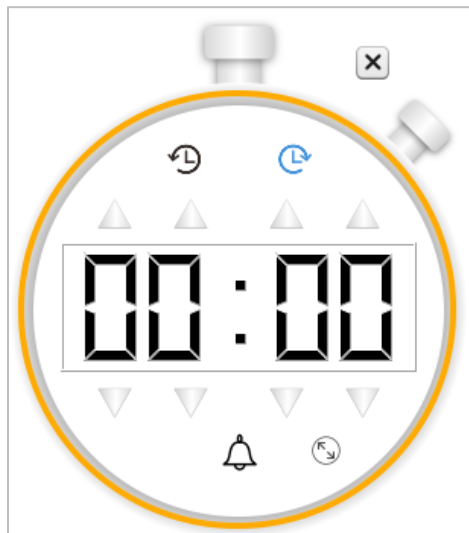
2.9. **Tool**



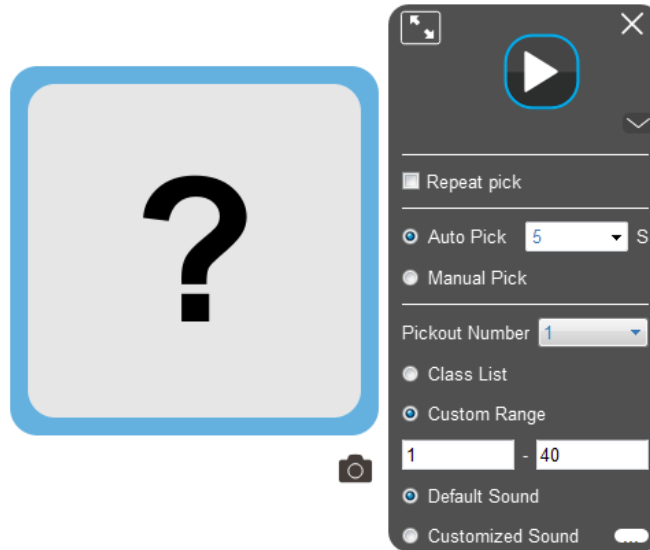
- a. **Curtain:** To cover the screen display, can be moved, flex and deform freely



b. Timer: clock (timer), stopwatch (countdown)



c. Select student to answer: Select automatically/manually, set range/quantity



d. Red packet: Grab red packet

- Support single score red packet(fixed score of each red packet), lucky red packet(random score)

Red Packet Setting
✕

Single point: Points

Fixed points, [Change to randomized red packet](#)

Red packet QTY: Packets

Total Students 30, Red Packets 5

- Display page of grabbing red packet: When the music start, there will show numbers of red packet on the up left corner, and numbers of red packet left.



- Grab red packet by speech key (QRF999 by speech key, QRF888 by finger key)

e. Roll call: Students sign in by clicking the finger key

Please click audio button to join the roll call

Participants: 2 / 30

DS	Student2	Student3	Student4	Student5	Student6	Student7	Student8	Student9	Student1
Student1	Student1	Student1	Student1	Student1	Student1	Student1	Student1	Student1	Student2
Student2	Student2	Student2	Student2	Student2	Student2	Student2	Student2	Student2	Student3

Finish

2.10. Begin answering

Question Setting ✕

Response Time: Min S

1 2 3 4 5 6 7 8 9 0 ✕

Single choice

Multiple choice

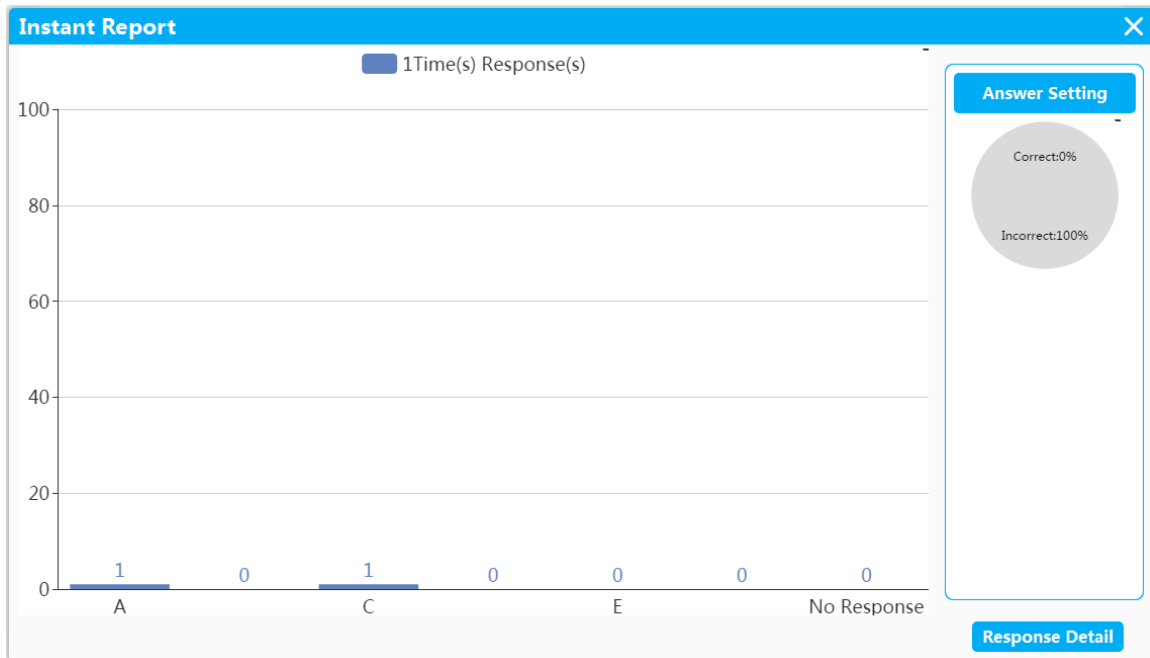
True or False

Multiple single choice

- a. Response time: Support customized answering time
- b. Single-choice: Only allow submit one answer(A-F)
- c. Multi-choice: Allow one answer(A-F), and click "√" to submit. Or multi answer and click "√" to submit
- d. T/F: Only allow you to submit "√" or "×"
- e. Speech: Long clicking speech key in the middle, and speak, then release to submit(only for QRF999)
- f. Batch multi choice: Click the answer in order, and click"√" to submit

2.11. Instant report

When the testing is finished, instant report will be generated



- a. Show right answer
- b. result report cylindrical in shape
- c. Right rate calculating in round shape

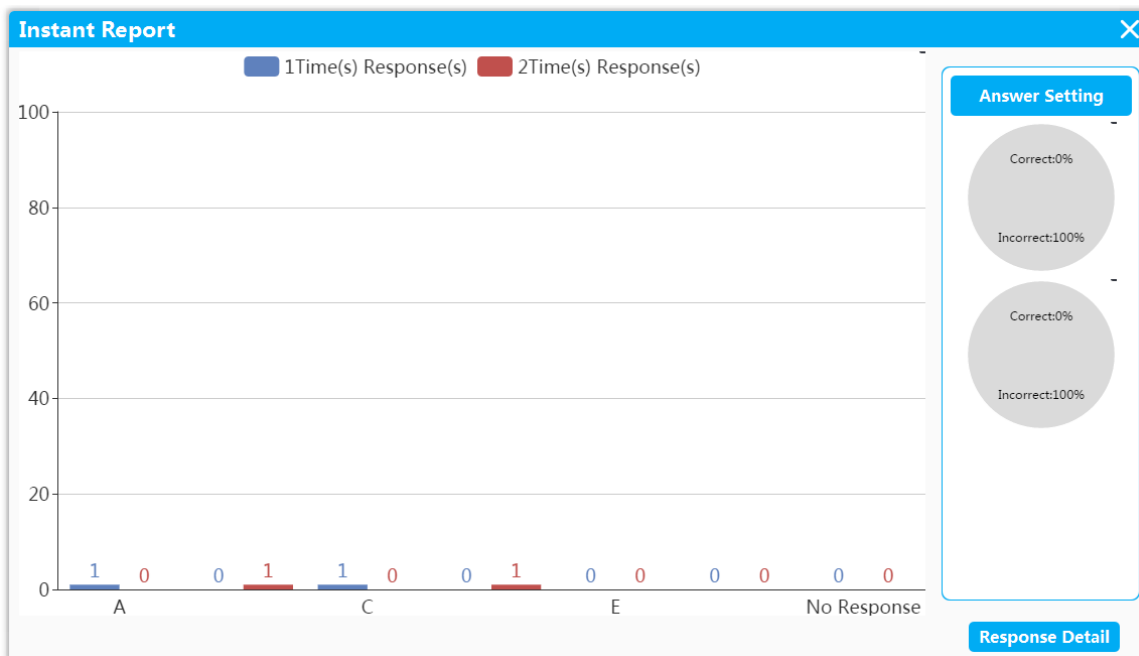
2.12 Answering detail:

It shows students No. name, answering detail. Green means student who answering correctly.

Response Detail		
Student ID	Student Name	Results1
1	DS	
2	Student2	
3	Student3	C
4	Student4	A
5	Student5	
6	Student6	
7	Student7	
8	Student8	
9	Student9	
10	Student10	
11	Student11	
12	Student12	
13	Student13	
14	Student14	
15	Student15	
16	Student16	
17	Student17	
18	Student18	

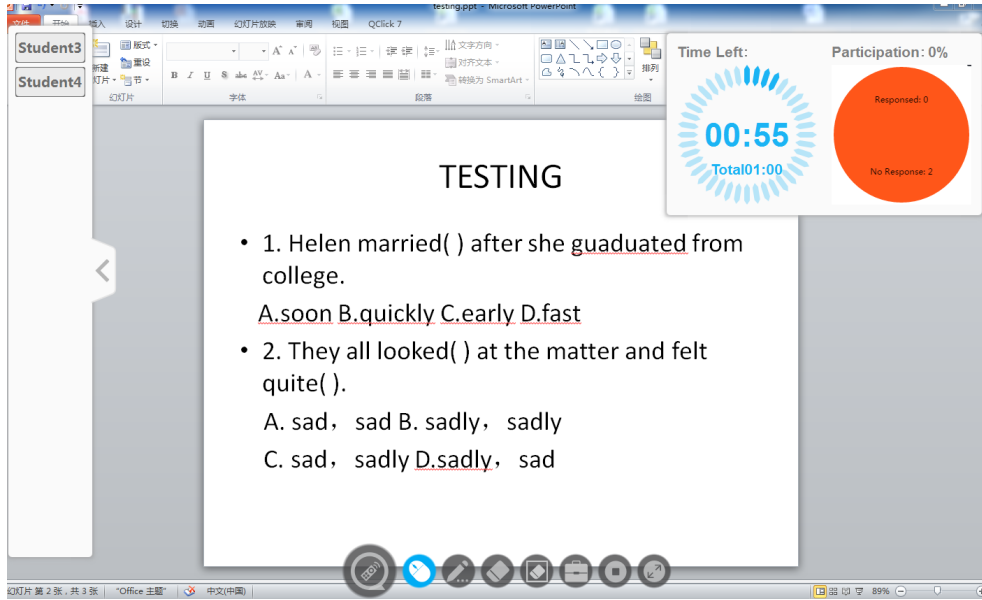
2.13 Repeated answer

Support repeated answering, the report will record the answering result of each time. Blue means answer of the first time. Brown means answer of second time.






2.14 Batch single choice

- Begin answering
- Student answer by remote when the question shown



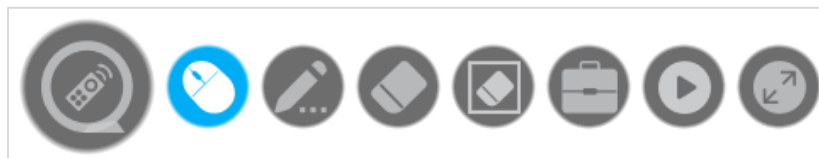
2.15 Page tool bar

- a. Add: add a blank page
- b. Page up
- c. Page down

- d. Page: click  , to open the preview photo; click the page, you can delete  or add 

2.16 Desk

Support Windows full desk annotation. Support running any software on the Windows desk and interaction



The software is floating on the desk in round, it can be moved, click it to hide, re-click it will display on the tool bar



Move mouse



Annotation: support color of black, red, yellow



Eraser



Clear the annotation



Tool

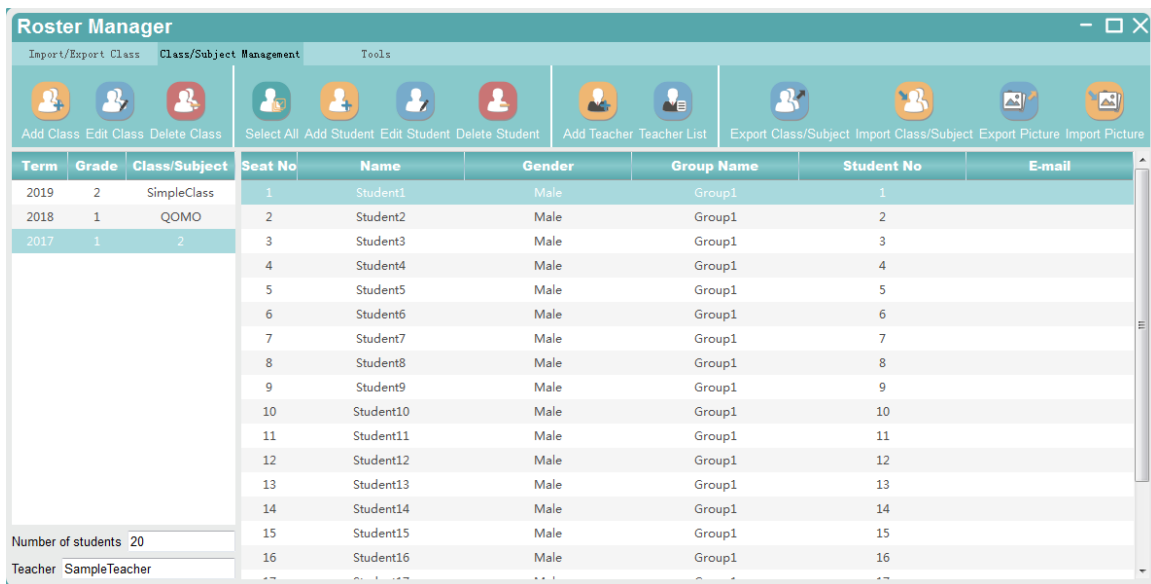


Begin



Back to the software

3 ClassManager

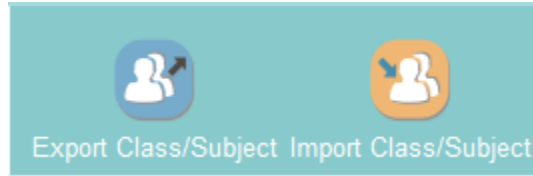


The screenshot shows the 'Roster Manager' application window. It features a menu bar with 'Import/Export Class', 'Class/Subject Management', and 'Tools'. Below the menu bar is a toolbar with icons for 'Add Class', 'Edit Class', 'Delete Class', 'Select All', 'Add Student', 'Edit Student', 'Delete Student', 'Add Teacher', 'Teacher List', 'Export Class/Subject', 'Import Class/Subject', 'Export Picture', and 'Import Picture'. The main area contains a table with the following data:

Term	Grade	Class/Subject	Seat No	Name	Gender	Group Name	Student No	E-mail
2019	2	SimpleClass	1	Student1	Male	Group1	1	
2018	1	QOMO	2	Student2	Male	Group1	2	
2017	1	2	3	Student3	Male	Group1	3	
			4	Student4	Male	Group1	4	
			5	Student5	Male	Group1	5	
			6	Student6	Male	Group1	6	
			7	Student7	Male	Group1	7	
			8	Student8	Male	Group1	8	
			9	Student9	Male	Group1	9	
			10	Student10	Male	Group1	10	
			11	Student11	Male	Group1	11	
			12	Student12	Male	Group1	12	
			13	Student13	Male	Group1	13	
			14	Student14	Male	Group1	14	
			15	Student15	Male	Group1	15	
			16	Student16	Male	Group1	16	

At the bottom left of the table, there are two summary fields: 'Number of students: 20' and 'Teacher: SampleTeacher'.

3.11 Class import/export

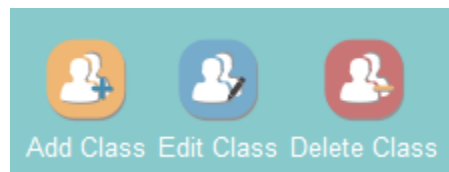


a. Export class/course:

Seat No	Name	Gender	Group Name	Student No	E-mail
1	Student1	Male	Group1	1	
2	Student2	Male	Group1	2	
3	Student3	Male	Group1	3	
4	Student4	Male	Group1	4	
5	Student5	Male	Group1	5	

b. Import class/course: import the class with template

3.12 Class management



a. Add class: Input the new class term, grade, class, number(request), group, students quantity(request), teacher(request)

Add Class
✕

Term

Grade

Class/Subject ID

Group No

Number of students

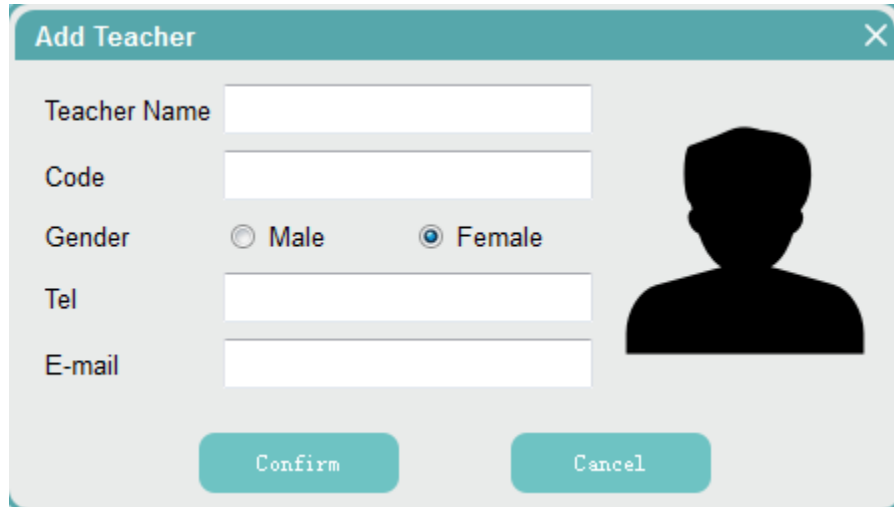
Teacher

Add Teacher

Confirm

Cancel

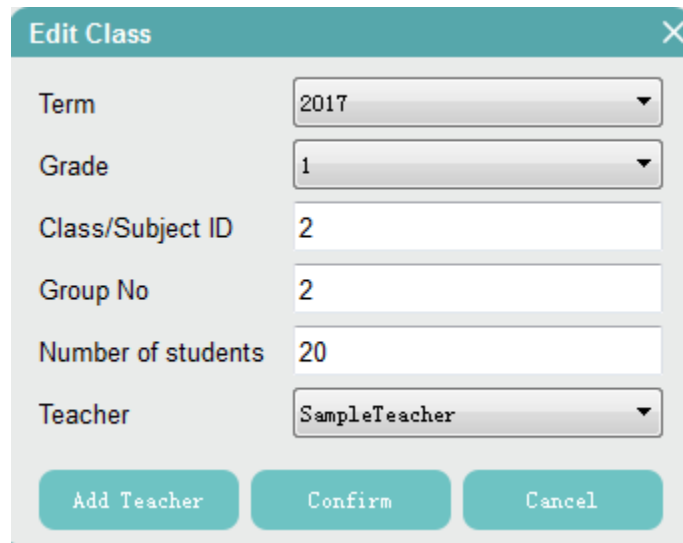
b. Add teacher: input class name(request), number(request), gender, tel, email.



The 'Add Teacher' dialog box contains the following fields and controls:

- Teacher Name:
- Code:
- Gender: Male Female
- Tel:
- E-mail:
- Buttons: Confirm, Cancel
- Image: A silhouette of a person's head and shoulders.

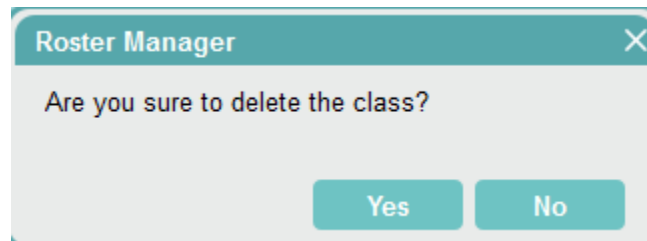
- c. Edit class: double-click the class catalog to edit the class information



The 'Edit Class' dialog box contains the following fields and controls:

- Term:
- Grade:
- Class/Subject ID:
- Group No:
- Number of students:
- Teacher:
- Buttons: Add Teacher, Confirm, Cancel

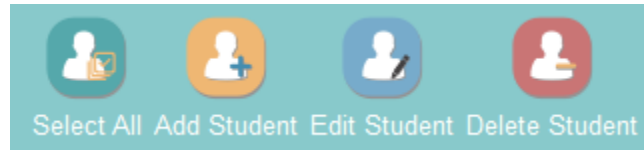
- d. Delete class: click the class, choose "delete" and confirm.



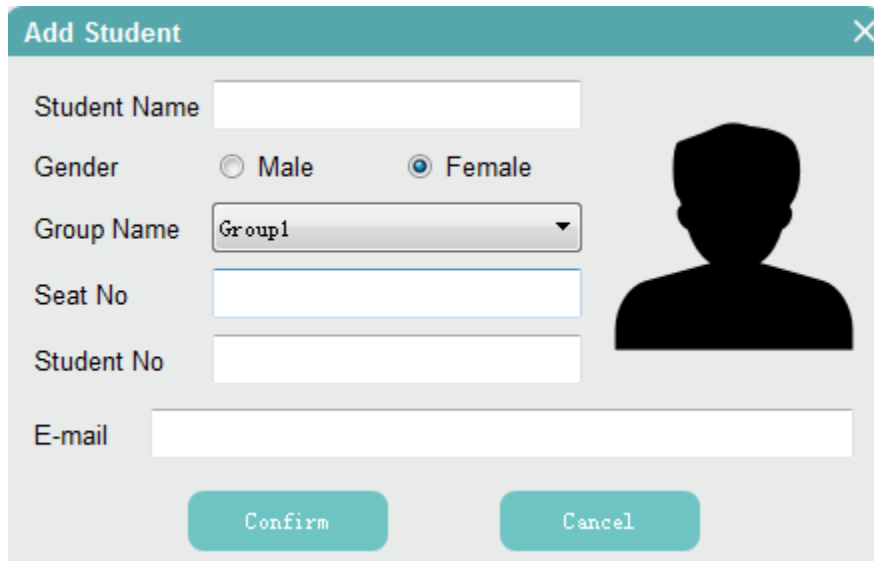
The 'Roster Manager' dialog box contains the following text and controls:

- Text: Are you sure to delete the class?
- Buttons: Yes, No

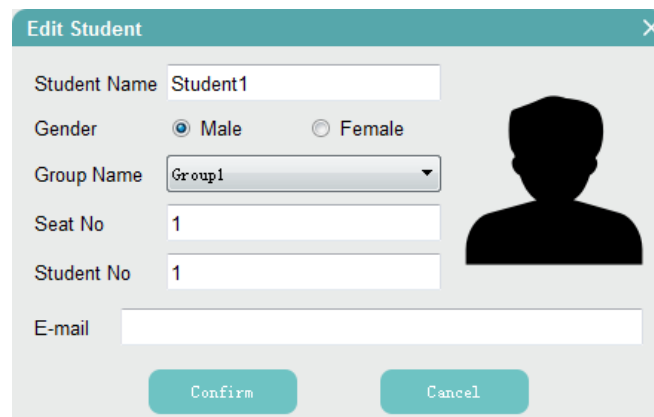
3.13 Students list



- a. Select all students: you can delete or edit the students gender in batch
- b. Add students: select the class, and add students, including name(request), gender, group, number, seat number(request),email



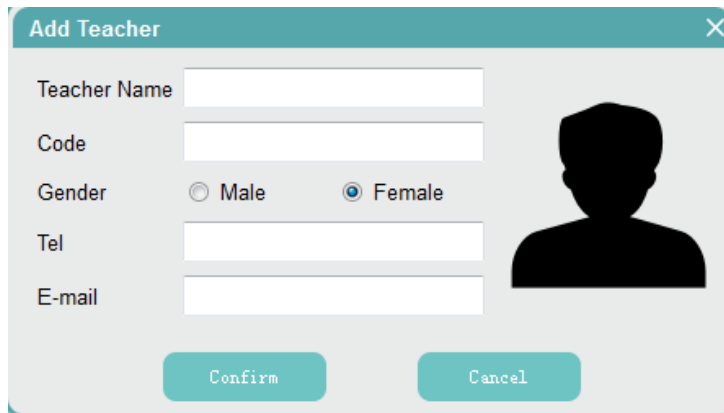
- c. Edit students: select class, choose the student name you want to edit: name, gender, group, seat number, student number, email



- d. Delete students
 - Delete single student
 - Delete multi students: click Ctrl and choose the students you want to delete.
 - Delete all students: select all students---delete

3.14 Teacher list

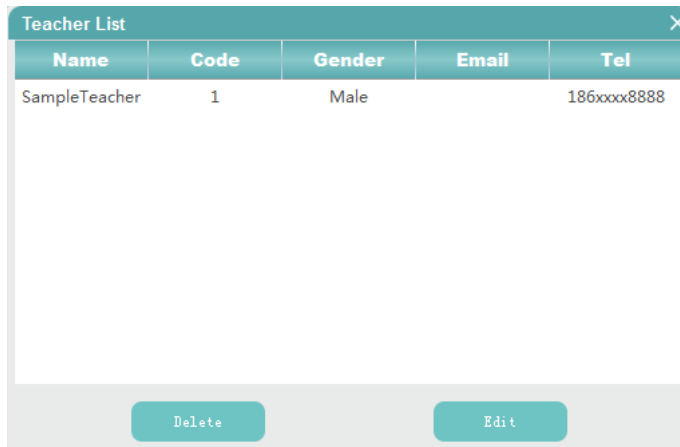
- a. Add teacher



The 'Add Teacher' dialog box contains the following fields and controls:

- Teacher Name:
- Code:
- Gender: Male Female
- Tel:
- E-mail:
- Buttons: Confirm, Cancel
- Placeholder: A silhouette icon representing a person.

- b. Teacher list: select the teacher to edit or delete



Name	Code	Gender	Email	Tel
SampleTeacher	1	Male		186xxxx8888

Buttons: Delete, Edit

3.15 Export class/course, Import class/course

- a. Export class/course
- b. Import class/course: import the class/course by the template

3.16 Tools

- a. Change gender to female
- b. Change gender to male
- c. Group Setting

